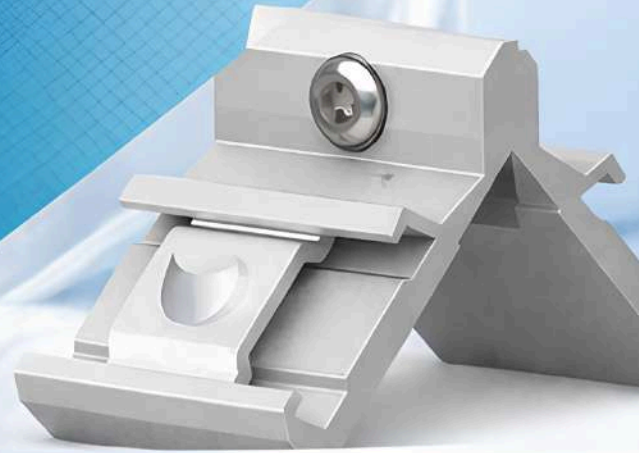


# ΔFT<sup>®</sup>

## ACCUFIT PRODUCTS



# PRODUCT CATALOGUE

2026

## ACCUFIT PRODUCTS



WINDOW  
FITTINGS



DOOR  
HARDWARE



CABINET  
ACCESSORIES



INDUSTRIAL  
COMPONENTS

*Precision Fit. Premium Finish.*

# CERTIFICATE

This is to certify that

All AFT products imported and marketed by **ACCUFIT Products** ([www.accufit.co.in](http://www.accufit.co.in)) are sourced from trusted international manufacturers and supplied under strict quality checks to ensure reliability, durability, and customer satisfaction.

Each AFT product is covered by a **10-Year Warranty** from the date of invoice.

## Warranty Exclusions

This warranty does not cover:

- Products not purchased from Accufit or authorized distributors
- Missing original invoice or defective part
- Damage from mishandling, improper storage, or accidents
- Improper installation or unsuitable environments
- Use of chemical cleaners or corrosive agents
- Unauthorized repairs, modifications, or non-standard use
- Normal wear and tear or negligence

WWW.ACCUFIT.CO.IN



Director's Signature

# Company Profile

Accufit Products is a leading manufacturer and supplier of premium uPVC and aluminium door and window hardware, offering reliable, high-performance solutions for modern architectural systems. Operating under the brand AFT, the company serves fabricators, builders, architects, and project developers across India.

Accufit specializes in a comprehensive range of uPVC and aluminium hardware fittings, including sliding and casement handles, hinges, espagnolette locks, multi-point locking systems, tilt & turn systems, sliding and folding hardware, and complete door-window hardware solutions. All products are engineered for smooth operation, long service life, and compatibility with a wide range of uPVC and aluminium profiles.

Quality is central to Accufit's operations. The company follows strict manufacturing and quality-control processes, offering ISO 9001:2015 certified products that meet international standards. Each component is designed for dimensional accuracy, ease of installation, corrosion resistance, and consistent performance under Indian climatic conditions.

Backed by a strong distribution network and dependable after-sales support, Accufit Products has established itself as a trusted name in the uPVC and aluminium hardware segment. With a focus on continuous innovation, technical support, and long-term partnerships, Accufit delivers value-driven solutions for residential, commercial, and project applications.

Accufit Products – Precision Hardware for Modern Architecture.

# INDEX

## 01 SYSTEM CONFIGURATIONS

---

Casement Door System .....	05 – 06
Casement Window System .....	07 – 09
Sliding Window System .....	10 – 11
Tilt & Turn Window System .....	12 – 14
Lift & Slide Hardware .....	15 – 16
Sliding & Folding Door Hardware.....	17 – 18

## 02 PRODUCT RANGE

---

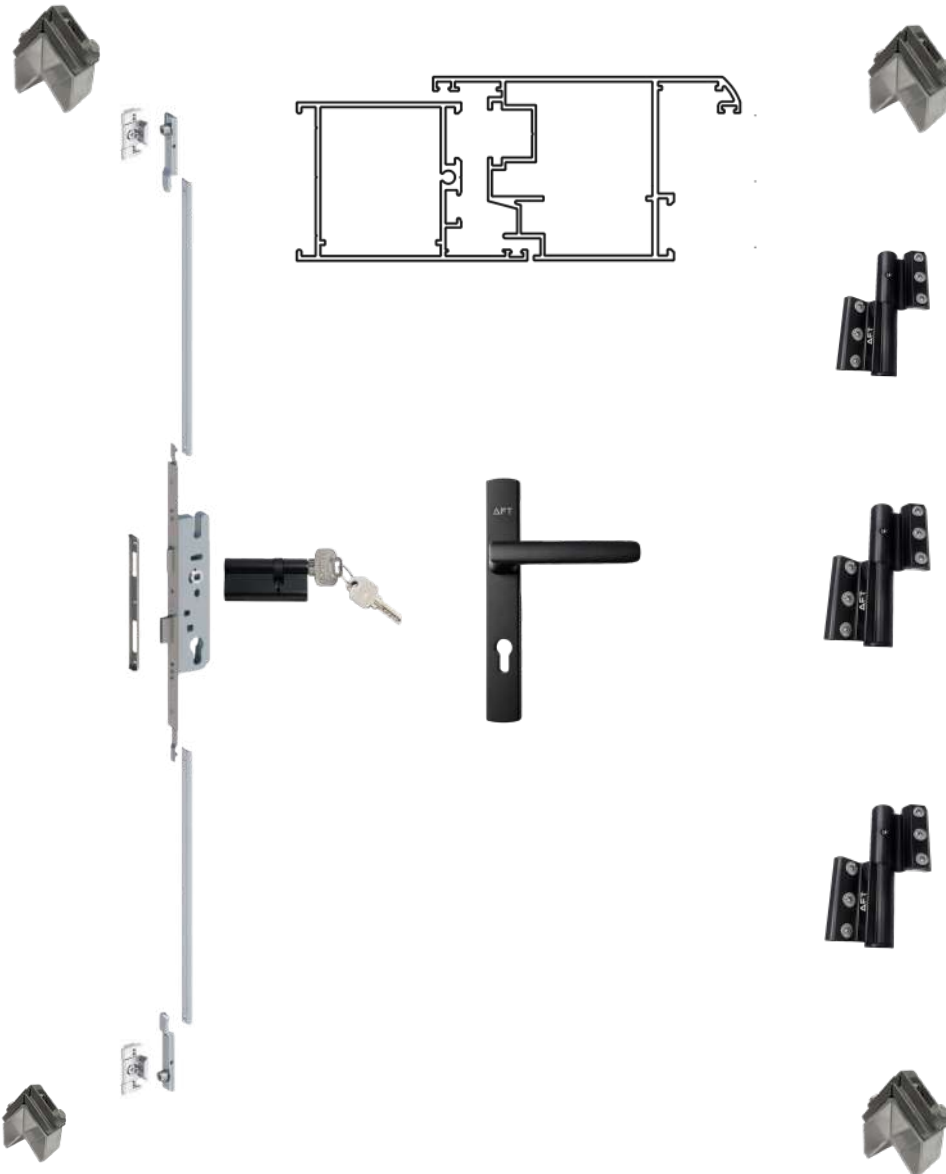
Corner Cleats .....	19 – 23
Mullion Cleats .....	24 – 26
Sliding Rollers .....	27 – 31
Locks & Touch Locks .....	32 – 36
Digital Touch Lock .....	37
Cockspur Handles.....	38 – 39
Lock Bodies (Multi-point & Single) .....	40 – 42
Door Handles (Casement) .....	43 – 46
Cylinders .....	47 – 46
Hinges (Butt, Door, & Hydraulic) .....	49 – 52
Friction Stays .....	53 – 56
Gear Boxes .....	57 – 58
Sliding Handles .....	59 – 64
Casement Handles (Cremone).....	65 – 67
Transmission Rods .....	68 – 70
Sliding Espag .....	71 – 73
Sliding Metro Handles .....	74 – 77
D Handles .....	78 – 79
Auto Shoot Bolts / Tower Bolts .....	80 – 81
Counter Plates .....	82 – 83

## 03 ACCESSORIES

---

Strikers, Connectors & Locking Pins .....	84 – 91
Sash Lifters & Plastic Components .....	92 – 98

# CASEMENT DOOR SYSTEM



## HANDLE VARIANTS



CDH-02



CDH-05

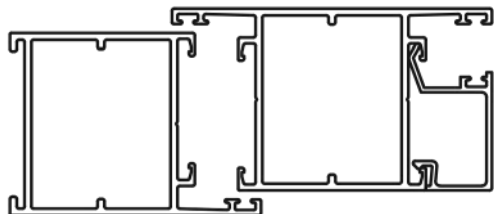


CDH-09

### 50MM CASEMENT DOOR HARDWARE CONFIGURATION :

NO.	NAME	ITEM NO.	PAGE NO.
1	MULTIPOINT MORTISE LOCK BODY	MPLB-35	42
2	COUNTER PLATE	CP 02	84
3	MORTICE HANDLE	CDH-02	45
4	CYLINDER	CY 85S-2C	43
5	POLYAMIDE STRIP	PLY	100
6	EURO LOCKING PIN	ELP-08	91
7	ADJUSTABLE STRIKER	LS-03	92
8	EURO DOOR HINGE	DH 05	52
9	CASEMENT DOOR SASH CORNER CLEAT	CC-03637	22
10	CASEMENT DOOR FRAME CORNER CLEAT	CC-03641	21

# CASEMENT DOOR SYSTEM



## HANDLE VARIANTS



CDH-04



CH-20



CH-22



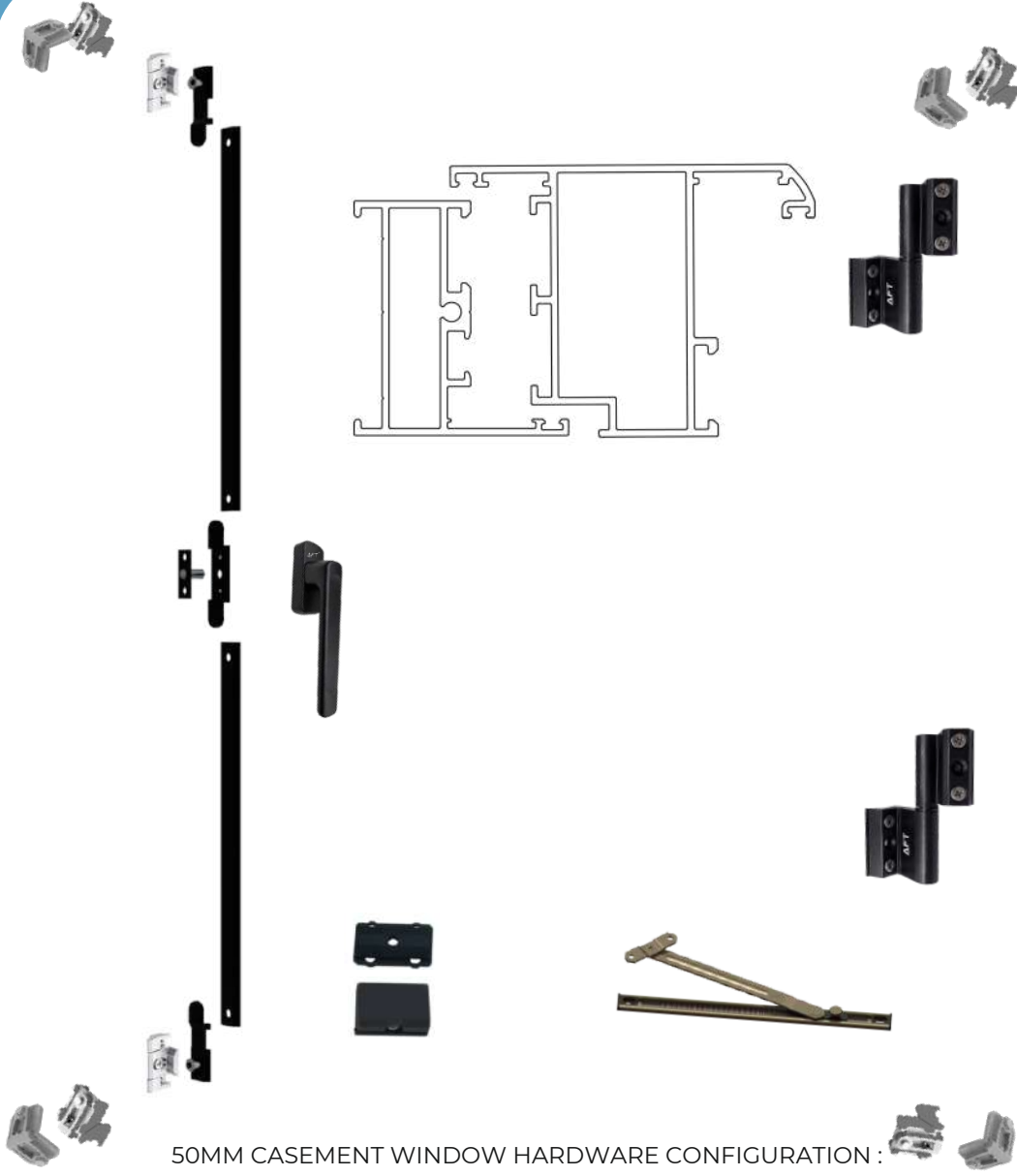
CDH-09



### 40MM CASEMENT DOOR HARDWARE CONFIGURATION :

NO.	NAME	ITEM NO.	PAGE NO.
1	MORTICE LOCK	SMLB-25	43
2	MORTICE HANDLE	CDH-09	47
3	CYLINDER CAP	CAP	47
4	EURO DOOR HINGE	WH-01	51
5	CASEMENT CORNER CLEAT	CC-014.5*36	21

# — CASEMENT WINDOWS SYSTEM



## HANDLE VARIANTS



CH-010



CH-09



SH-34

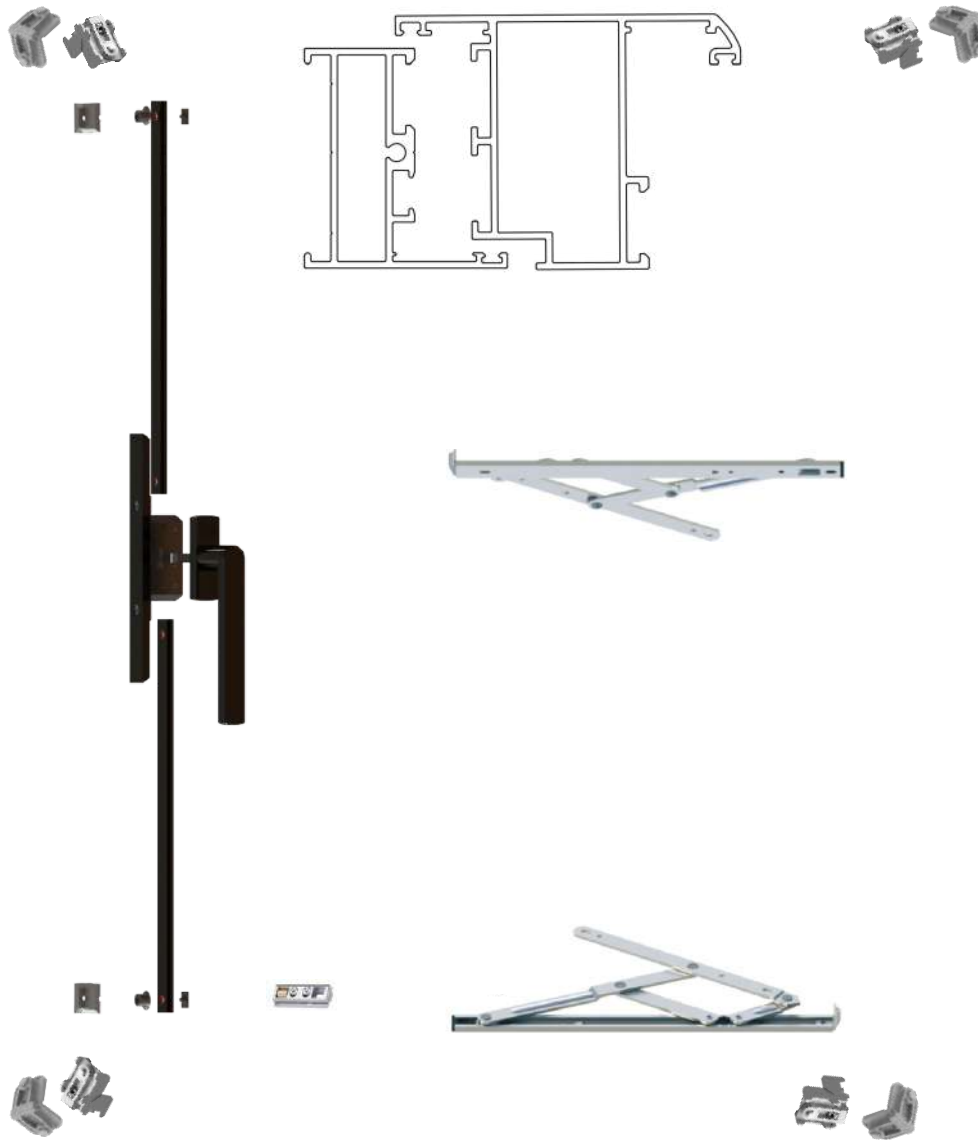


CH-08

50MM CASEMENT WINDOW HARDWARE CONFIGURATION :

NO.	NAME	ITEM NO.	PAGE NO.
1	EURO T CONNECTOR	ETC-01	87
2	POLYMIDE STRIP	PLY	100
3	EURO LOCKING PIN	ELP-08	91
4	ADJUSTABLE STRIKER	LS-03	92
5	CREMONE HANDLE	SH-34	61
6	EURO HINGE	WH-02	51
7	EURO GROOVE ARM STAY	ERA	57
8	NYLON SASH LIFTER	HD 62	
9	CORNER CLEAT WINDOW SHUTTER	CC-02837	
10	CORNER CLEAT WINDOW FRAME	CC-01041	22

# — CASEMENT WINDOWS SYSTEM —



50MM CASEMENT WINDOW HARDWARE CONFIGURATION :

NO.	NAME	ITEM NO.	PAGE NO.
1	GEAR BOX	SGB-020	59
2	POLYMIDE STRIP	PLY	100
3	LOCKING POINT	LP-06	91
4	EURO STRIKIER	LS-03	92
5	CASEMENT WINDOW HANDLE	0	
6	EURO GROOVE FRICTION STAY	EFS-CH-08	56
7	ROLLON SASH LIFTER	SH-04	93
8	CORNER CLEAT WINDOW SHUTTER	CC-02735	22
9	CORNER CLEAT WINDOW FRAME	CC-01041	22

## HANDLE VARIANTS

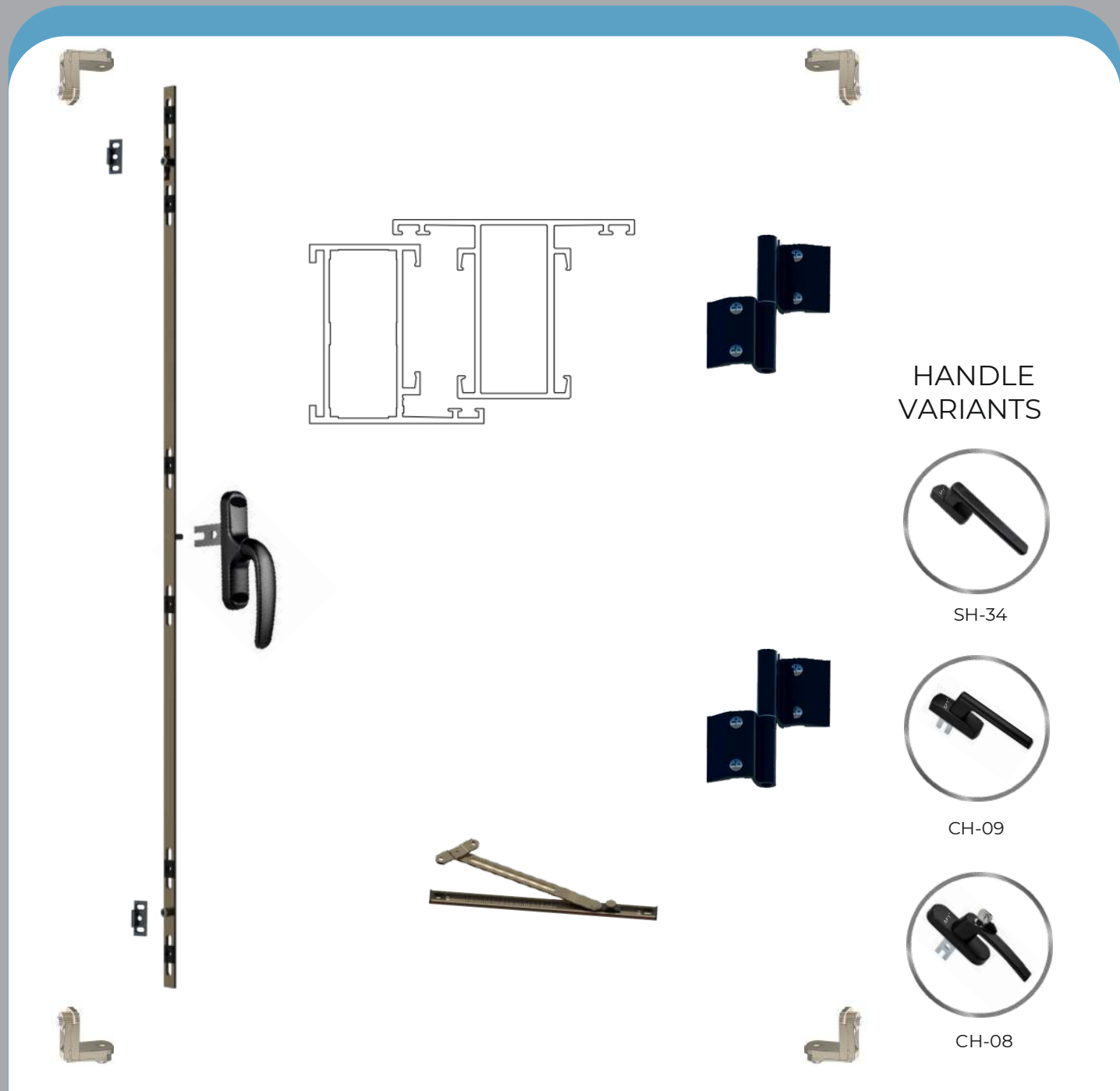


CH-11



CH-13

# — CASEMENT WINDOWS SYSTEM —



## HANDLE VARIANTS



SH-34



CH-09



CH-08

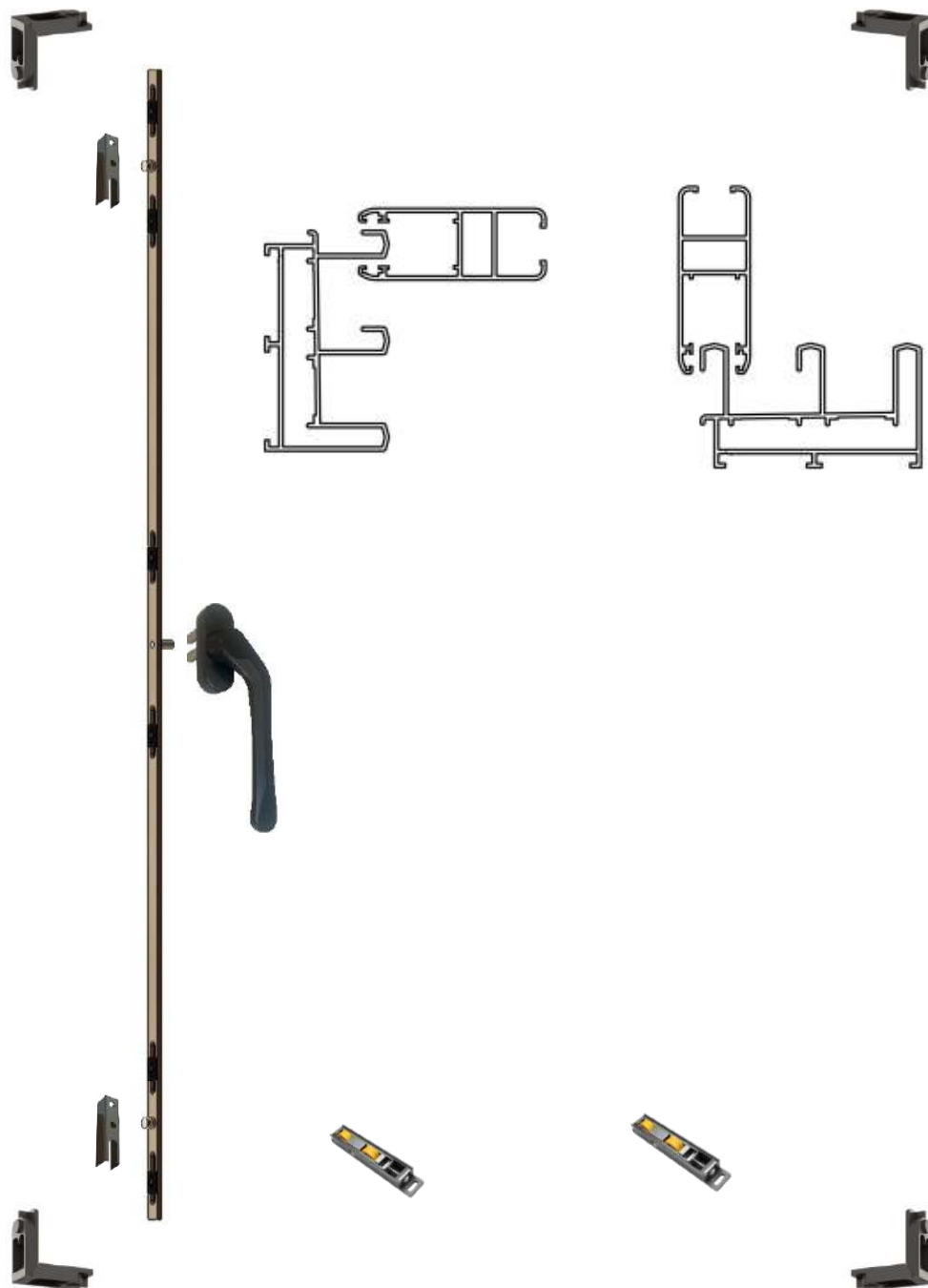


CH-010

### 40MM CASEMENT WINDOW HARDWARE CONFIGURATION :

NO.	NAME	ITEM NO.	PAGE NO.
1	TRANSMISSION ROD	CTR-(400-1200)	71
2	STRIKER	LS-02	92
3	CREMONE FORK HANDLE	CH-010	67
4	BUTT HINGES	WH-01	51
5	CORNER CLEAT	CC-01436	21
6	RESTRICTOR ARM	RA-01	

# — SLIDING WINDOWS SYSTEM —



## HANDLE VARIANTS



SH-35

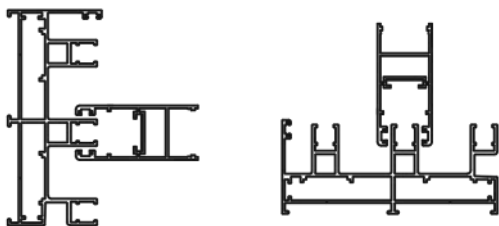
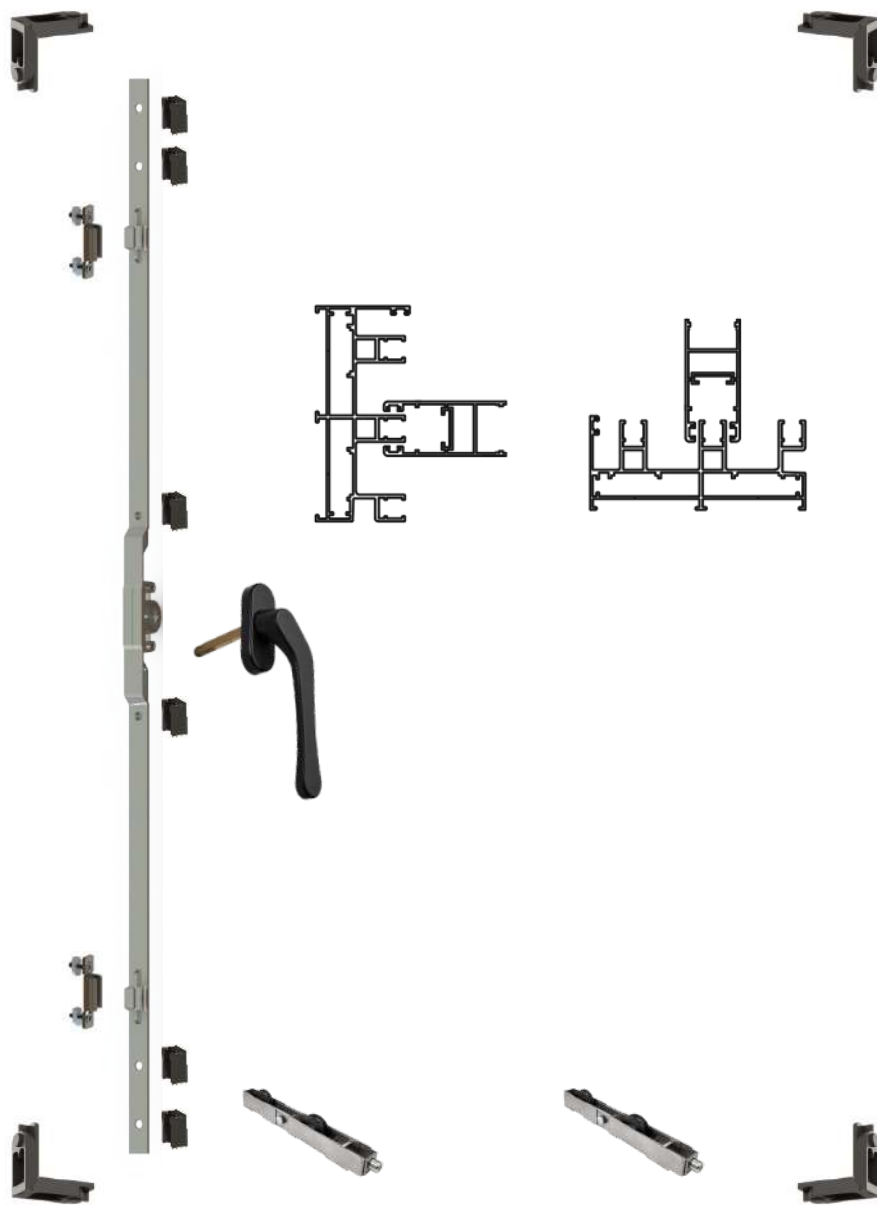


SH-36

### 27MM SLIDING WINDOW HARDWARE CONFIGURATION :

NO.	NAME	ITEM NO.	PAGE NO.
1	SLIDING TRANSMISSION ROD	STR-400-1800	70
2	SLIDING STRIKER		
3	SLIDING CREMONE HANDLE	SH-36	62
4	ADJUSTABLE DOUBLE WHEEL ROLLER	SR-014V	31
5	CORNER CLEAT	CC-1022	20

# — SLIDING WINDOWS SYSTEM —



## HANDLE VARIANTS



SH-07



SH-36



SMH-04



SH-09

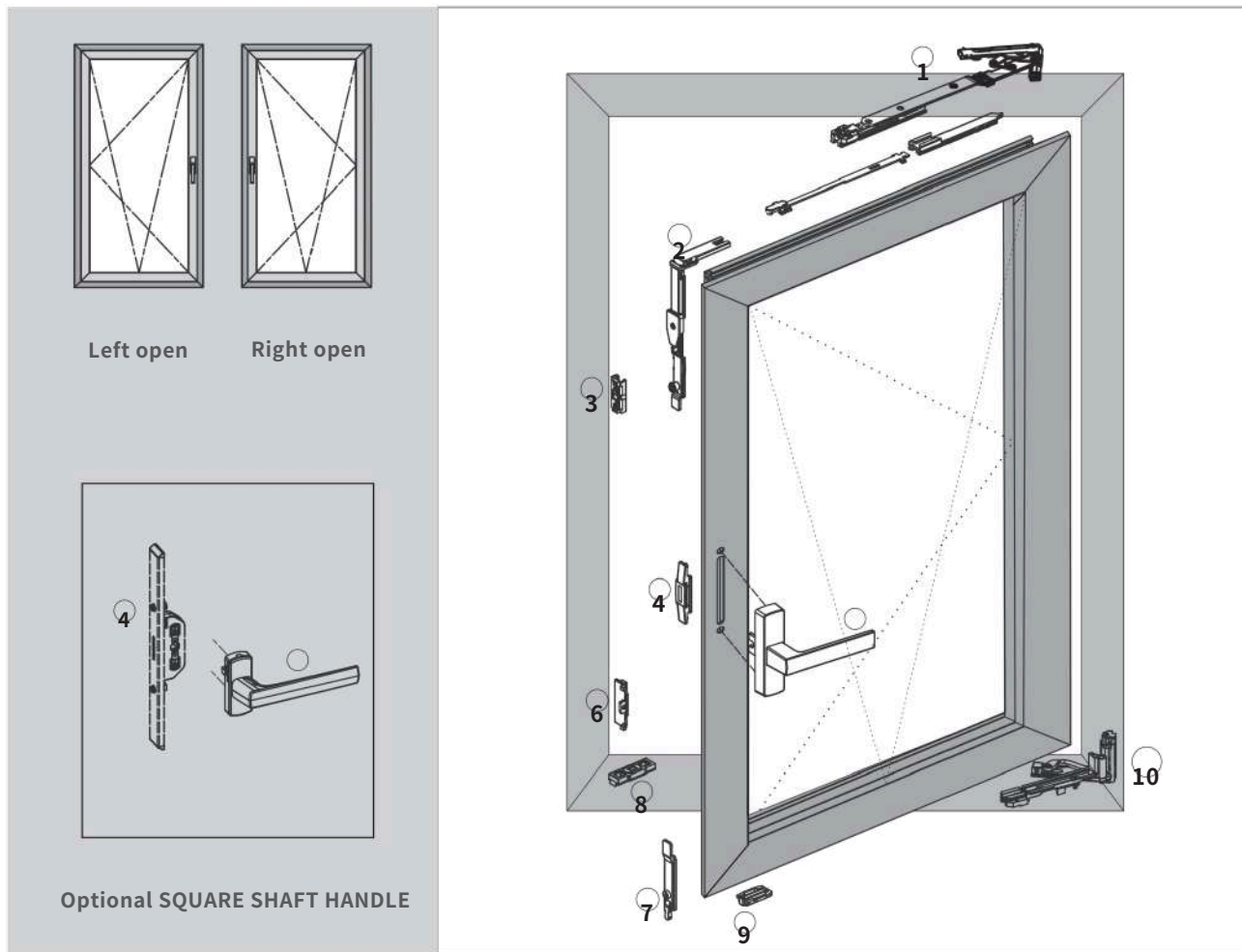


SH-011

### 29/32/37MM SLIDING WINDOW HARDWARE CONFIGURATION :

NO.	NAME	ITEM NO.	PAGE NO.
1	SLIDING ESPAGE 7.5MM	SWE-400-1800	73
2	PVC ADUSTER	PVC-ADJ	
3	SLIDING STRIKER	ECS-01	87
4	ADJUSTABLE DOUBLE ROLLER	SR-02	28
5	CORNER CLEAT	CC-1024	20
6	TRANSMISSION SHORT NECK HANDLE	SH-35	62

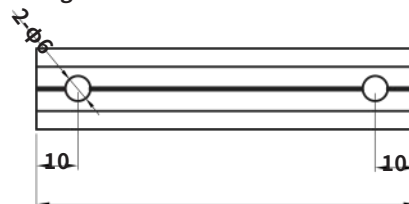
TILT AND TURN WINDOW HARDWARE SYSTEM



**Configuration Description:**

1. The width range of the fan face in this configuration is 500-1200, and the height range of the fan face is 600-2000; The width to height ratio of the window shall not exceed 1:1.5;
2. The maximum load-bearing capacity of this configuration is 85KG; The maximum opening angle is 95°;
3. This configuration can be equipped with a square shaft handle and a one-way transmission box;
4. Proper and reasonable selection of high-quality sealing strips can enhance the durability of hardware components;

Cutting size of transmission aluminum rod



L (total length)

**TILT AND TURN WINDOW HARDWARE SYSTEM**

**degree hidden tilt and turn Window Hardware Configuration Lis**



Name	Name	Name	Name
1.upward hinge Left/right	2. corner drive	3. European standard keeper	4. one way gear box
			4. intermediate transmission



Name	Name	Name	Name
5. Handle	6. keeper E	7. locking rod	8. European standard keeper
5. Fork Handle			



Name	Name
9. Sash rising block	10. bottom hinge Left/right

## Tilt and turn window Hardware system

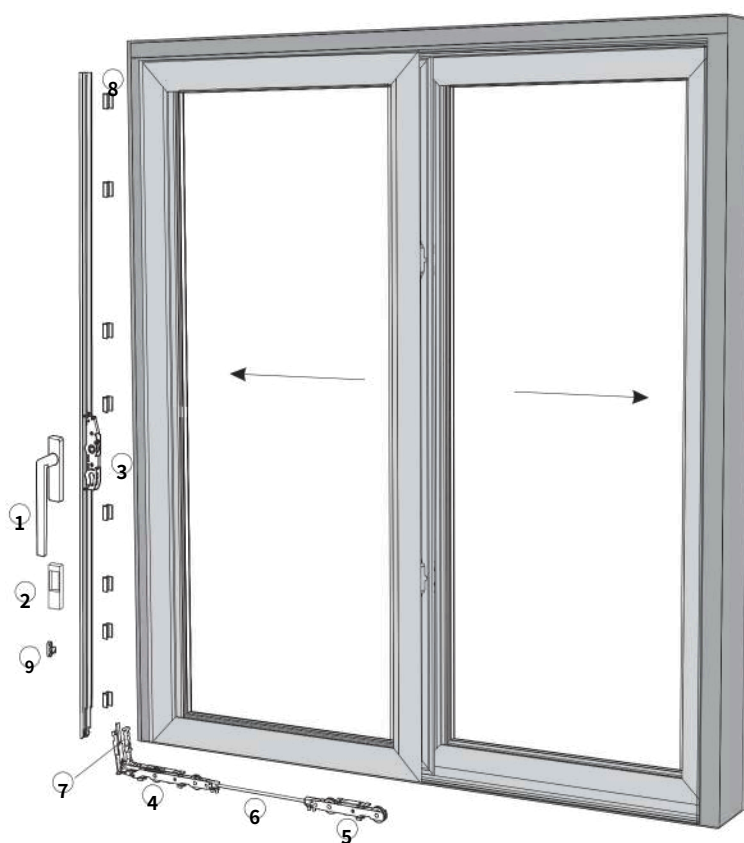
### 90 degree hidden tilt and turn Window Hardware Configuration Lis( rack system)

No	Code	Name	QTY	Re-mark
1		upward hinge Left/right	1	
2		corner drive	1	optional eccentric nails
3		European standard keeper	1	optional eccentric nails
4		intermediate transmission	1	Optional
5		Fork Handle	1	Optional
6		keeper E	1	
7		locking rod	1	
8		European standard keeper	1	
9		Sash rising block	1	
10		bottom hinge Left/right	1	

### FOT420 90 degree hidden tilt and turn Window Hardware Configuration Lis(shaft system)

No	Code	Name	QTY	Re-mark
1		upward hinge Left/right	1	
2		Corner drive	1	optional eccentric nails
3		European standard keeper	1	Optional
4		one way gear box	1	Optional
5		handle	1	Optional
6		keeper E	1	
7		locking rod	1	
8		European standard keeper	1	
9		Sash rising block	1	
10		bottom hinge Left/right	1	

LIFT & SLIDE HARDWARE



# LIFT & SLIDE HARDWARE

## List of Hardware Configuration for Sliding door



Name	Name	Name	Name
Handle	2. Button handle	3. Enhance push-pull transmission	4. Front wheel assembly

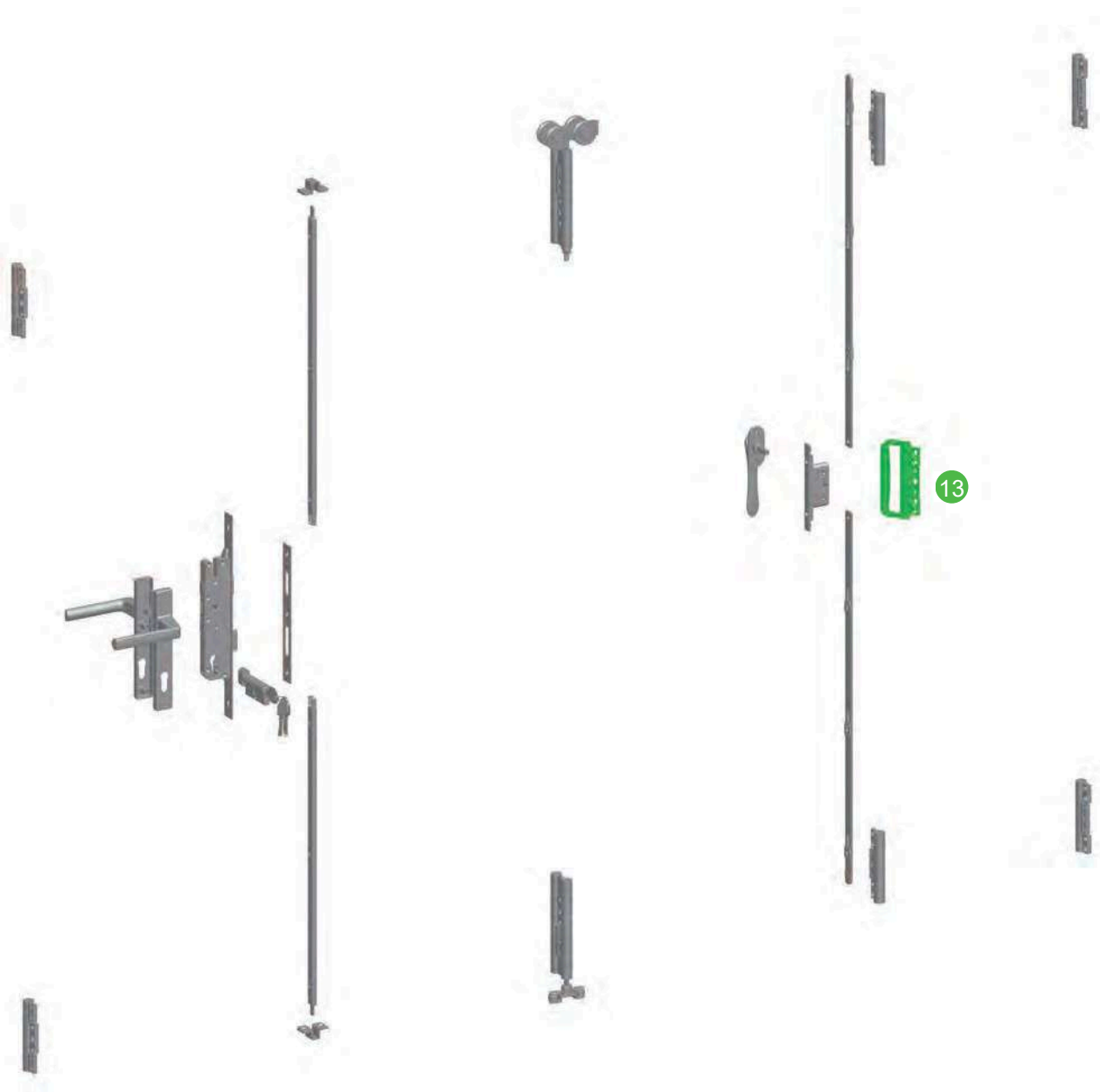
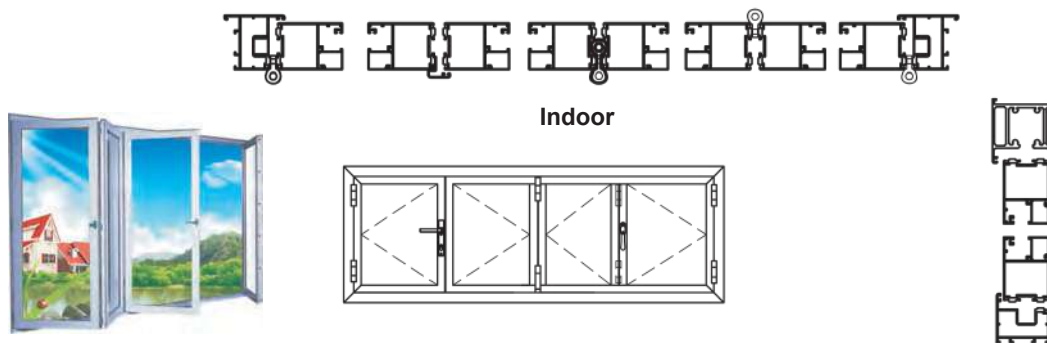


Name	Name	Name	Name
5. Rear wheel group	6. Wheel set connecting rod	7. Aluminum cushion block	8. Plastic cushion block



Name	Name	Name	Name
9. lock bracket	10. Lock Seat Plate	11. Sash Anti-Collision Block	12. Wheel Set Rest Block

Series Sliding & Folding Door



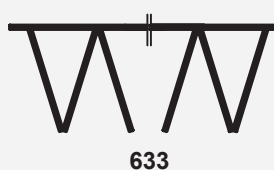
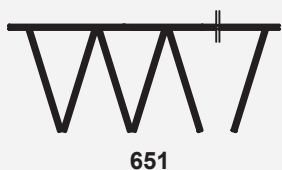
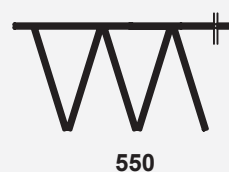
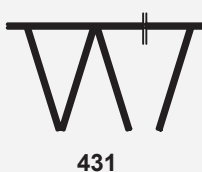
Hardware Configuration for FTL200 Series

Number	Product name	Code	Quantity	Remark
01	Upper pivot hinge system		1	
02	Bottom pivot hinge system		1	
03	Side pivot hinge		6	
04	Transmitter		1	
05	Handle		1	
06	Shoot bolt		2	
07	Locking plate		2	
08	Socket		2	
09	Handle		1	
10	Door lock		1	
11	Cylinder		1	
12	Cover plate		1	
13	Handle hinge		1	

**Configuration instruction.**

- ① Guide rail of upper pivot hinge system bears the load while the guide rail of bottom pivot hinge system which can be called barrier-free guide rail does not affect the door operation.
- ② Applicable to single sash dimension with width 800mm, height 2400mm and weight ≤60kg.
- ③ Items in green are optional. handle hinge is applicable to open-out configuration.
- ★ Configuration of the sash is flexible (Please see the following sketch), please contact our technical department for specific configuration.
- ★ In this system, open-in and open-out function can be achieved by means of changing profile.

**Configuration.**



★ Note: Please contact with our technical department for specific configuration.

# Corner Cleats



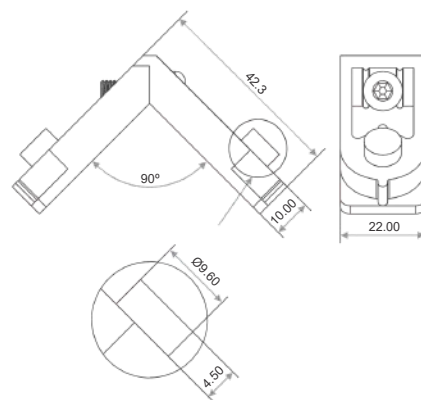
# CORNER CLEAT

**CC-01022**



**27mm Sliding Corner Cleat  
(Imported)**

Finish : Aluminium

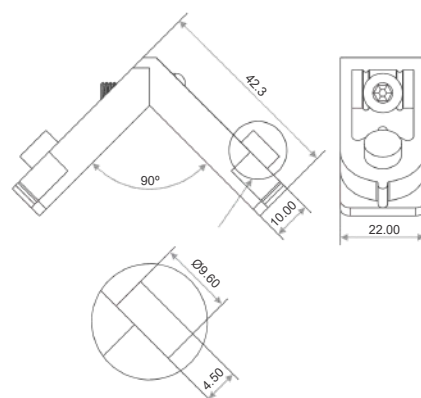


**CC-01022**



**27mm Sliding Corner Cleat  
(Italian)**

Finish : Zinc

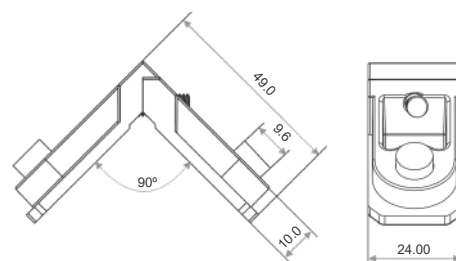


**CC-01024**



**29mm Sliding Corner Cleat  
(Imported)**

Finish : Aluminium

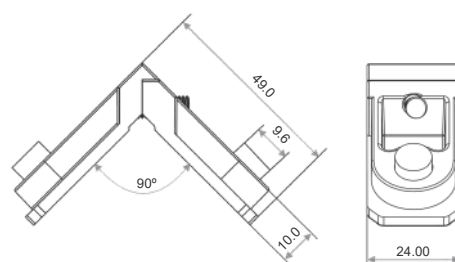


**CC-01024**



**29mm Sliding Corner Cleat  
(Italian)**

Finish : Zinc



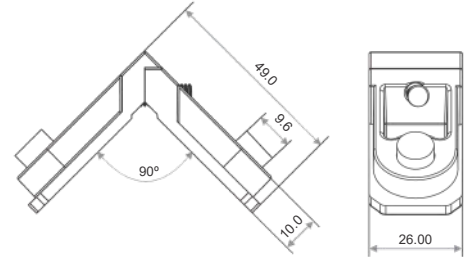
# CORNER CLEAT

**CC-01026**



**32mm Sliding Corner cleat (Imported)**

Finish : Aluminium

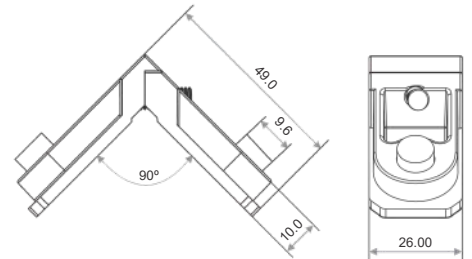


**CC-01026**



**32mm Sliding Corner cleat (Italian)**

Finish : Zinc

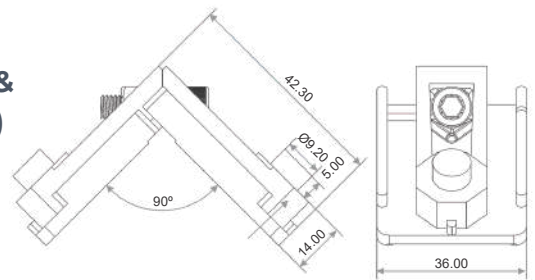


**CC-01436**



**40mm Casement Door & Frame Cleat (Imported)**

Finish : Aluminium

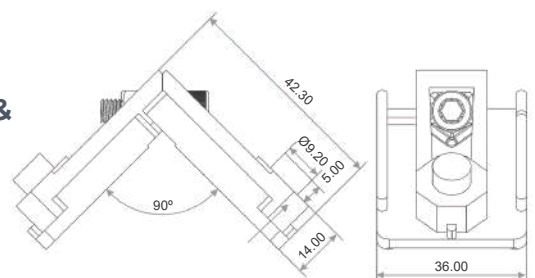


**CC-01436**



**40mm Casement Door & Frame Cleat (Italian)**

Finish : Zinc



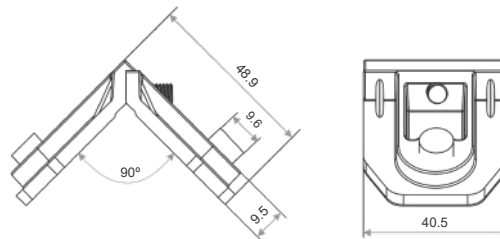
# CORNER CLEAT

**CC-01041**



**50mm Casement window  
Frame Cleat (Imported)**

Finish : Aluminium

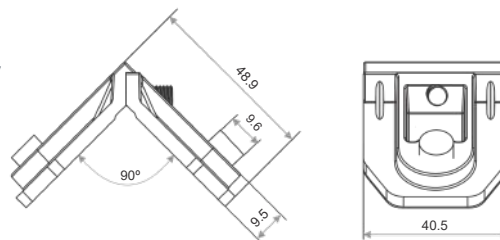


**CC-01041**



**50mm Casement window  
Frame Cleat (Italian)**

Finish : Zinc

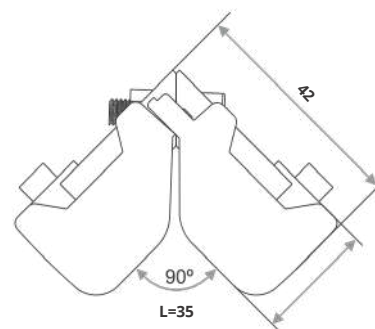


**CC-03527**



**50mm Casement window  
Sash Cleat**

Finish : Aluminium

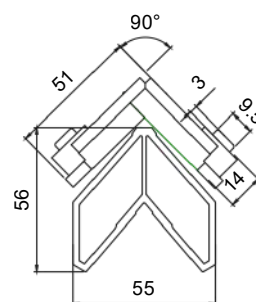


**CC-03637**



**50mm Casement Door Frame  
Cleat**

Finish : Aluminium



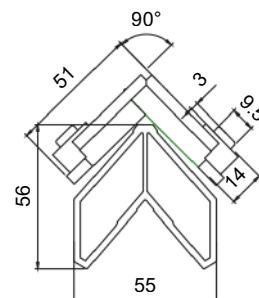
# CORNER CLEAT

## CC-04137



**50mm Casement Sash Cleat**

Finish : Aluminium

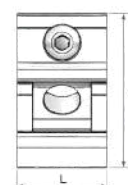
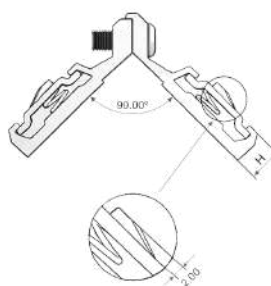
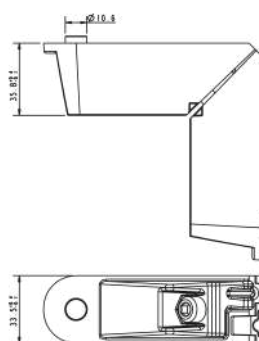


## CC-03633



**50mm Casement Sash Cleat**

Finish : Aluminium



Item Code	Description	H (mm)	L (mm)	A (mm)	Finish	Qty
CC1022	10X22mm Adj. Corner Cleat	10	22	42.5		
CC1024	10X24mm Adj. Corner Cleat	10	24	42.5		
CC1026	10X26mm Adj. Corner Cleat	10	26	42.5		
CC1436	14X36mm Adj. Corner Cleat	10	36	42.5		
CC1041	10X41mm Adj. Corner Cleat	10	41	42.5		

# ***Mullion Cleat***



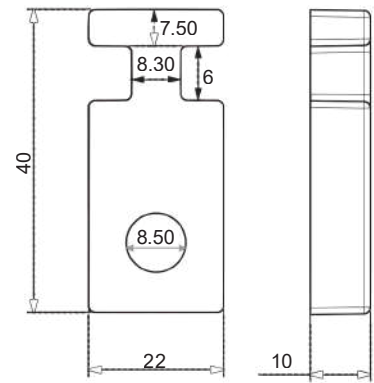
# MULLION CLEAT

## MC-01022



**27mm/29mm Sliding Interlock  
Single Glass Cleat**

Finish : Aluminium Casting

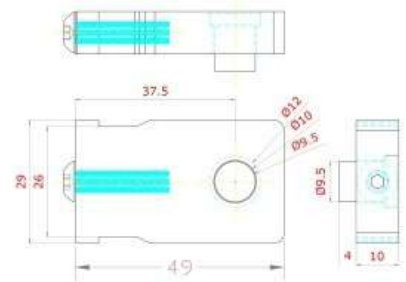


## MC-01022



**27mm/29mm Sliding Interlock  
Double Glass Cleat**

Finish : Aluminium Casting

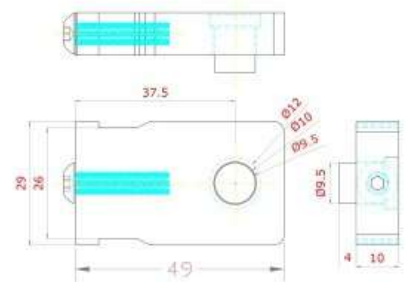


## MC-01028



**32mm Sliding Interlock Double  
Glass Cleat**

Finish : Aluminium Casting

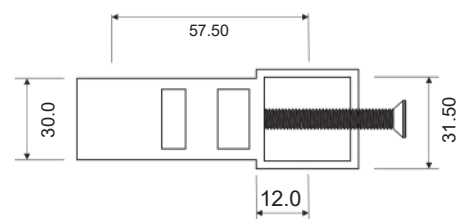


## MC-01230



**37mm Sliding Interlock Double  
Glass Cleat**

Finish : Aluminium



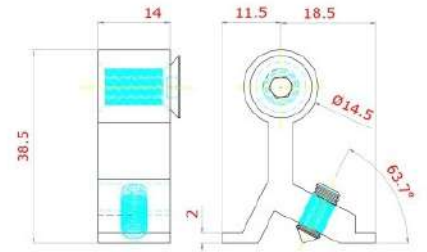
# MULLION CLEAT

## MC-040A



**40mm Casement Mullion Cleat**

Finish : Aluminium

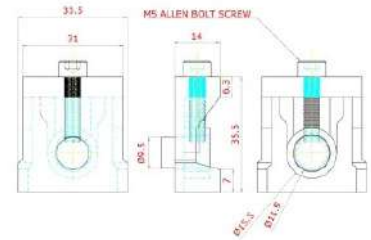


## MC-040C



**40mm Casement Mullion Cleat**

Finish : Aluminium Casting

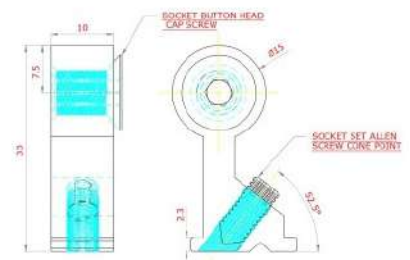


## MC-050A



**50mm Casement Mullion Cleat  
(Euro)**

Finish : Aluminium



# Rollers



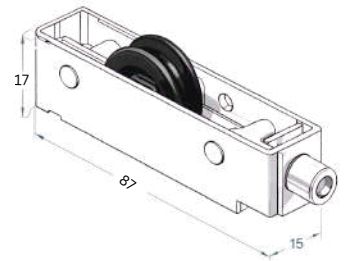
# SLIDING ROLLER

## SR-015



**Sliding U- Groove Adjustable Roller  
(Single Wheel) (15\*17)**

Size : 25mm/27mm/29mm/32mm  
Weight Capacity : 60Kg

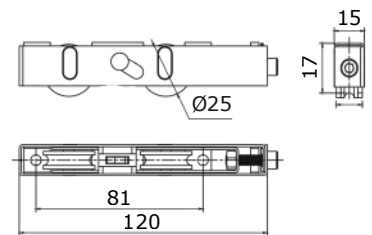


## SR-016



**Sliding U- Groove Adjustable Roller  
(Double Wheel) (15\*17)**

Size : 25mm/27mm/29mm/32mm  
Weight Capacity : 100Kg



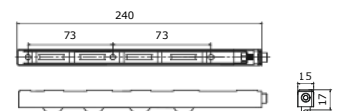
100 Kgs

## SR-017



**Sliding U- Groove Adjustable Roller  
(Four Wheel) (15\*17)**

Size : 25mm/27mm/29mm/32mm  
Weight Capacity : 130Kg



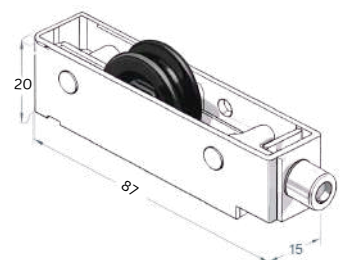
130 Kgs

## SR-018



**Sliding U- Groove Adjustable Roller  
(Single Wheel) (15\*20)**

Size : 25mm/27mm/29mm/32mm  
Weight Capacity : 60Kg



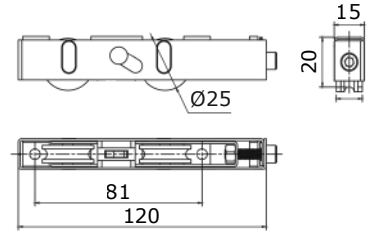
# SLIDING ROLLER

## SR-019



**Sliding U- Groove Adjustable Roller  
(Double Wheel) (15\*20)**

Size : 25mm/27mm/29mm/32mm  
Weight Capacity : 100Kg



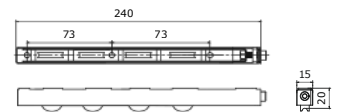
100 Kgs

## SR-020



**Sliding U- Groove Adjustable Roller  
(Four Wheel) (15\*20)**

Size : 25mm/27mm/29mm/32mm  
Weight Capacity : 130Kg



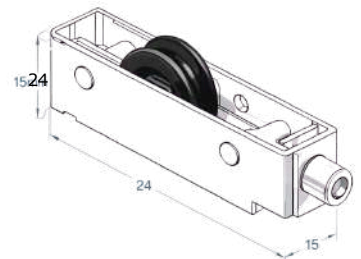
130 Kgs

## SR-021



**Sliding U- Groove Adjustable Roller  
(Single Wheel)**

Size : 25mm/27mm/29mm/32mm  
Weight Capacity : 60Kg

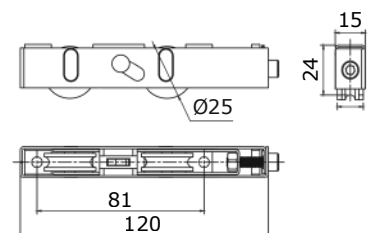


## SR-022



**Sliding U- Groove Adjustable Roller  
(Double Wheel)**

Size : 25mm/27mm/29mm/32mm  
Weight Capacity : 100Kg



100 Kgs

# SLIDING ROLLER

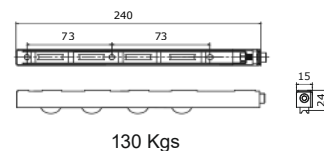
## SR-023



**Sliding U- Groove Adjustable Roller  
(Four Wheel)**

Size : 25mm/27mm/29mm/32mm

Weight Capacity : 130Kg



130 Kgs

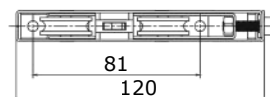
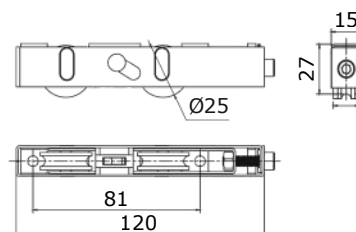
## SR-024



**Sliding U- Groove Adjustable Roller  
(Double Wheel)**

Size : 35mm/37mm

Weight Capacity : 120Kg



120 Kgs

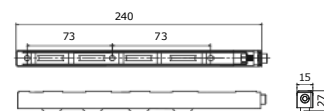
## SR-025



**Sliding U- Groove Adjustable Roller  
(Four Wheel)**

Size : 35mm/37mm

Weight Capacity : 150Kg



150 Kgs

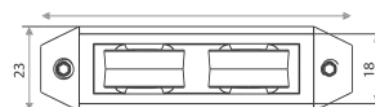
## SR-026



**Sliding U- Groove Roller / Sliding V-  
Groove Roller**

Size : 27mm/29mm

Weight Capacity :



# SLIDING ROLLER

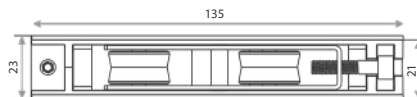
## SR-027



**Sliding U- Groove Adjustable Roller /  
Sliding V- Groove Adjustable Roller**

Size : 27mm/29mm

Weight Capacity :



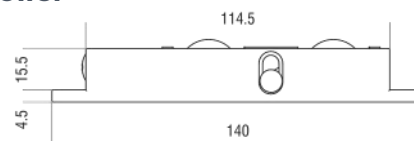
## SR-028



**Sliding U- Groove Adjustable Roller /  
Sliding V- Groove Adjustable Roller**

Size : 27mm/29mm

Weight Capacity :



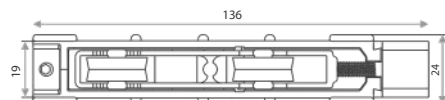
## SR-029



**Sliding U- Groove Adjustable Roller /  
Sliding V- Groove Adjustable Roller**

Size : 27mm/29mm

Weight Capacity :



# Touch Lock

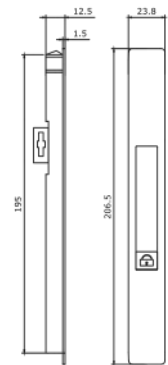


# TOUCH LOCK

**SL-01**



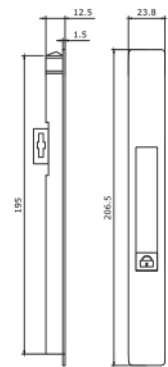
**Sliding Door & Window Touch Lock  
Manual / Automatic**



**SL-01F**



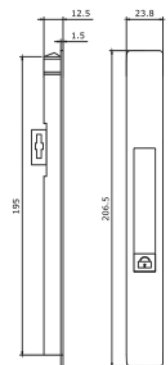
**Sliding Concealed Door & Window  
Lock With Fork**



**SL-02**



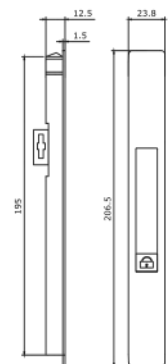
**Sliding Door & Window Touch Lock  
Manual / Automatic**



**SL-02F**



**Sliding Concealed Door & Window  
Lock With Fork**

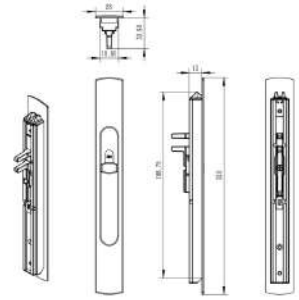


# TOUCH LOCK

**SL-03F**



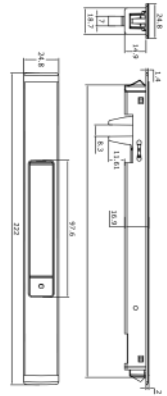
**Sliding Door & Window Touch Lock  
With Fork**



**SL-04**



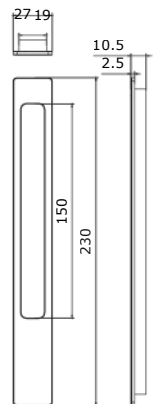
**Sliding Concealed Door Premium  
Touch Lock [Manual with Fork]**



**SL-04D**



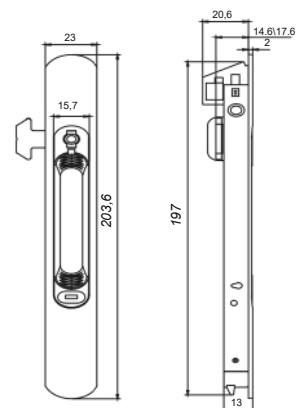
**Sliding Concealed Door Dummy  
Touch Lock**



**SL-05**



**Sliding Door & Window Touch Lock**



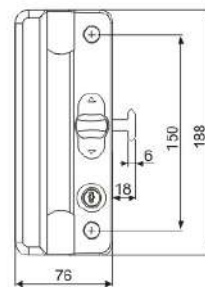


# TOUCH LOCK

**SL-010**



**Sliding Door & Window Touch Lock**



DIGITAL TOUCH LOCK WITH MORTISE LOCK BODY



# ***Cockspur Handle***

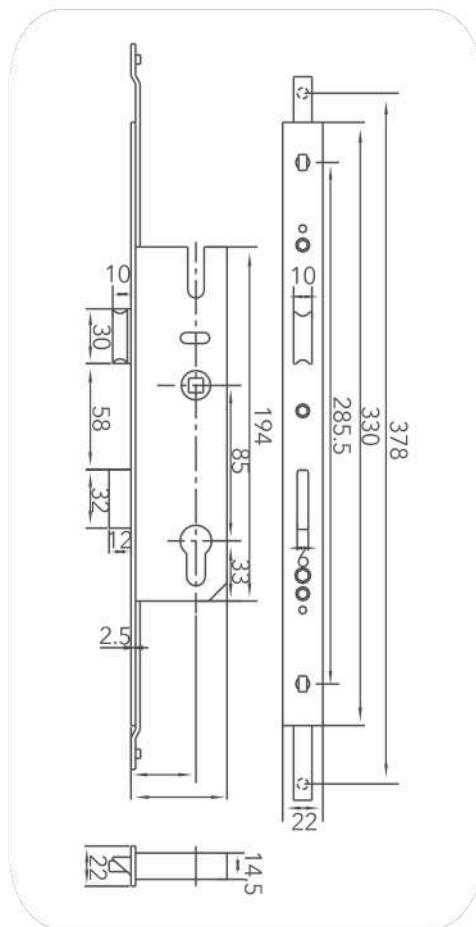




# Lock Body



# MULTI POINT LOCK BODY



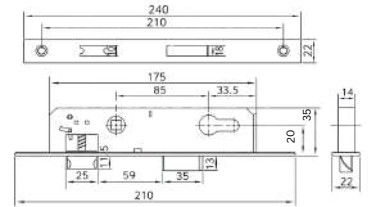
Code	Name	Dimension
MPLK-025	40mm Multipoint Door Lock Body	85mm*25mm
MPLK-030	50mm Multipoint Door Lock Body	85mm*30mm
MPLK-035	50mm Multipoint Door Lock Body	85mm*30mm

# LOCK BODY

## SMLB-020



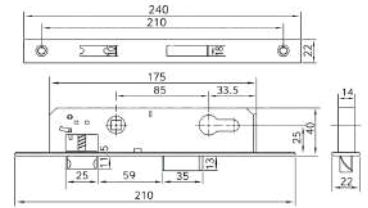
**40mm Casement door Single Point Lock Body**



## SMLB-025



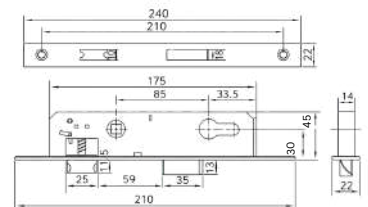
**40mm Casement door Single Point Lock Body**



## SMLB-030



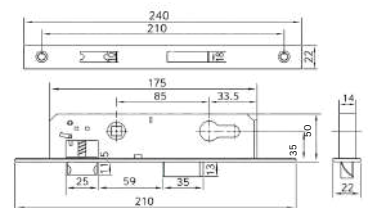
**50mm Casement door Single Point Lock Body**



## SMLB-035



**50 mm Casement door Single Point Lock Body**



# ***Casement door handle***

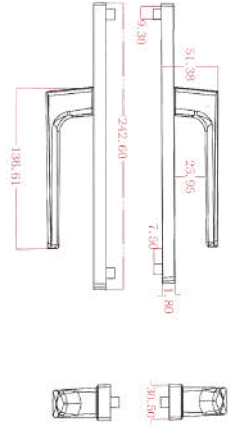


# DOOR HANDLE

## CDH-01



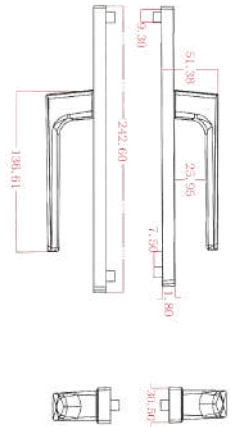
**40mm/50mm Casement door  
Handle [Model No.1]**



## CDH-02



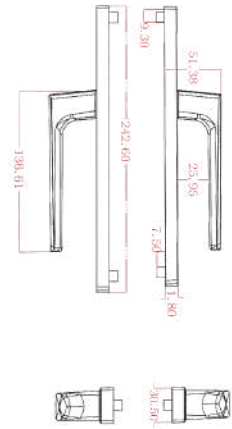
**40mm/50mm Casement door  
Handle [Model No.2]**



## CDH-03



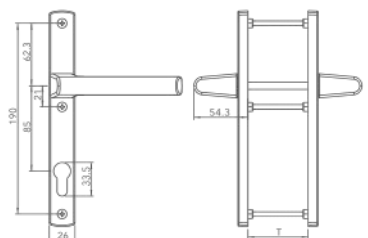
**40mm/50mm Casement door  
Handle [Model No.4]**



## CDH-04



**40mm/50mm Casement door  
Handle**

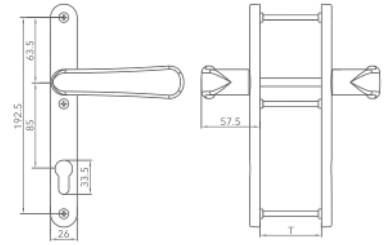


# DOOR HANDLE

## CDH-05



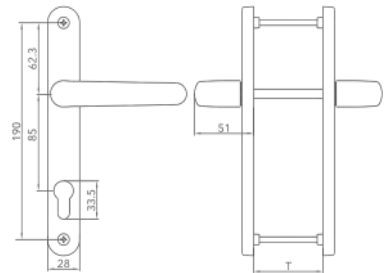
40mm/50mm Casement door Handle



## CDH-06



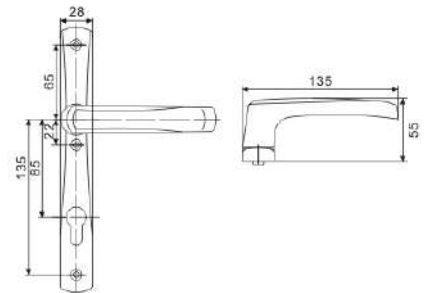
40mm/50mm Casement door Handle



## CDH-07



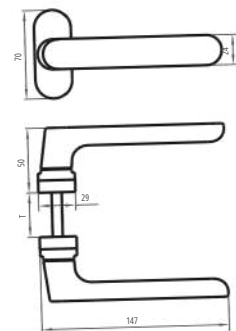
40mm/50mm Casement door Handle



## CDH-08



Mortice Door Handle Black

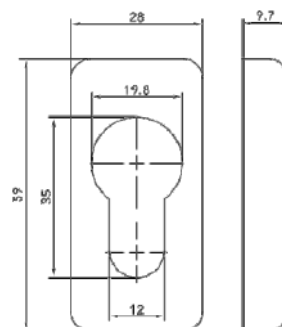


# DOOR HANDLE

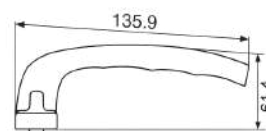
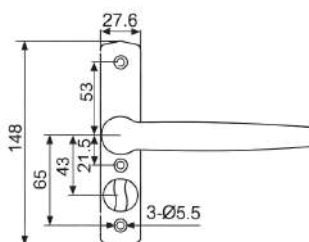
## CDH-08 CAP



Cylinder Cap



## BDS-40

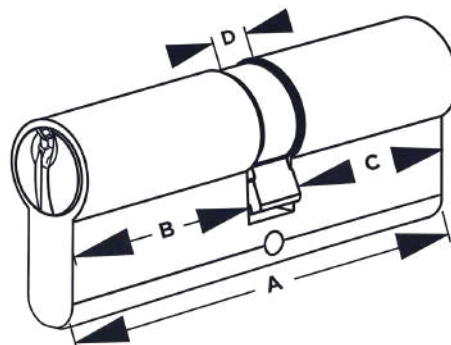


40mm Bathroom Set

# Cylinder



# CYLINDER



Product Code	Description	Dimension
CY85BSK(S)	50mm Door Cylinder	25+10+50
CY85OSK(S)	50mm Door Cylinder (Outward)	50N+10+25
CY85OSK(S)	50mm Door Cylinder (Inward)	25N+10+50
CY60BSK	40mm Door Cylinder	25+10+25
CY60OSK	40mm Door Cylinder	25N+10+25
CY70BSK	40mm Door Cylinder	30+10+30
CY70BSK	40mm Door Cylinder	25+10+35
CY70OSK	40mm Door Cylinder	30+10+30
CY70OSK	40mm Door Cylinder (Inward)	25N+10+35
CY70OSK	40mm Door Cylinder (Outward)	35N+10+25

# Hinges

Premium Architectural Hardware



# HINGE

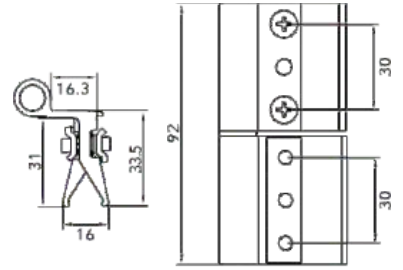
## WH-01



### Casement Door & Window Hinge

Size : 40mm

Weight Capacity : 60Kg



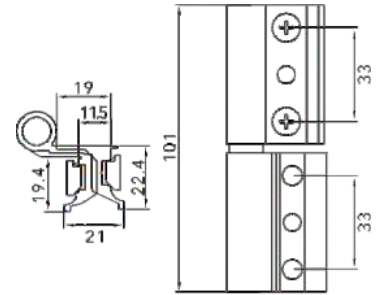
## WH-02



### Casement Window Hinge

Size : 50mm

Weight Capacity : 60Kg



60kgs

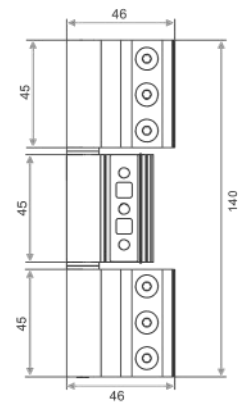
## WH-03



### Casement Door Hinge

Size : 50mm

Weight Capacity : 110Kg



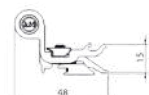
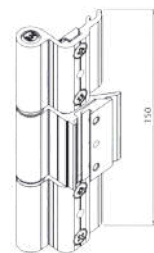
## WH-04



### Casement Door Hinge

Size : 40mm

Weight Capacity : 110Kg



# HINGE

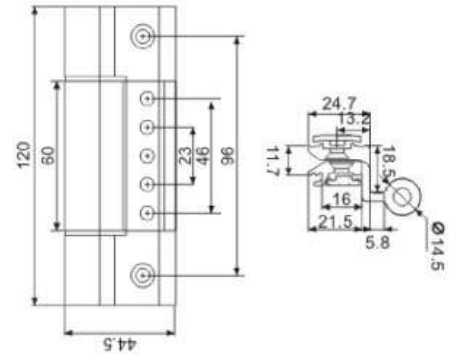
## DH-03



### Casement Door Hinge

Size : 50mm

Weight Capacity : 100Kg



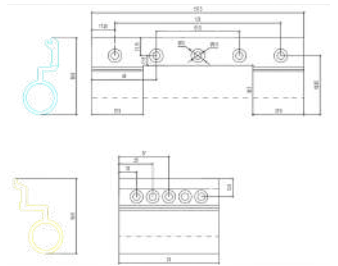
## DH-04



### Casement Door Hydraulic Hinge

Size : 50mm

Weight Capacity : 200Kg



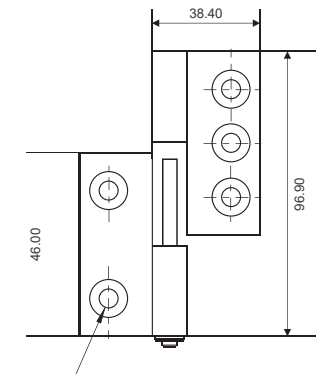
## DH-05



### Casement Door Hinge

Size : 50mm

Weight Capacity : 150Kg



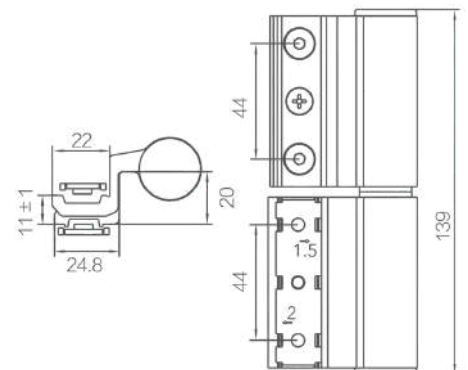
## DH-06



### Casement Door Hinge

Size : 50mm

Weight Capacity : 120Kg



# HINGE

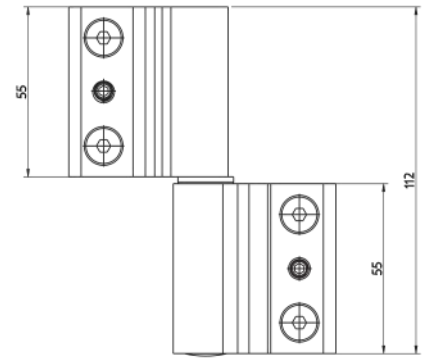
## DH-07



### Casement Door Hinge

Size : 50mm

Weight Capacity : 100Kg



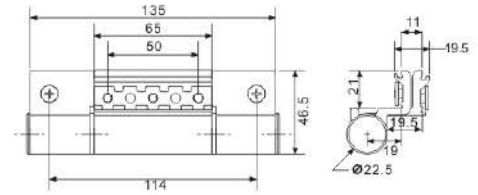
## DH-08



### Casement Door Hinge

Size : mm

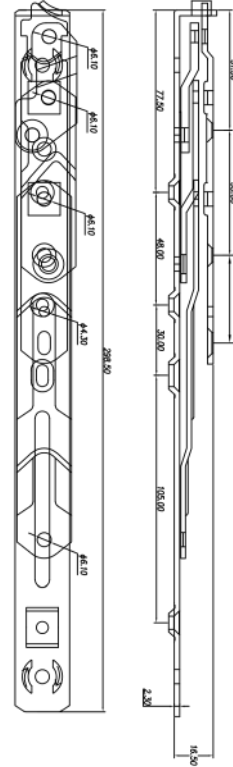
Weight Capacity : Kg



# ***Friction Stay***

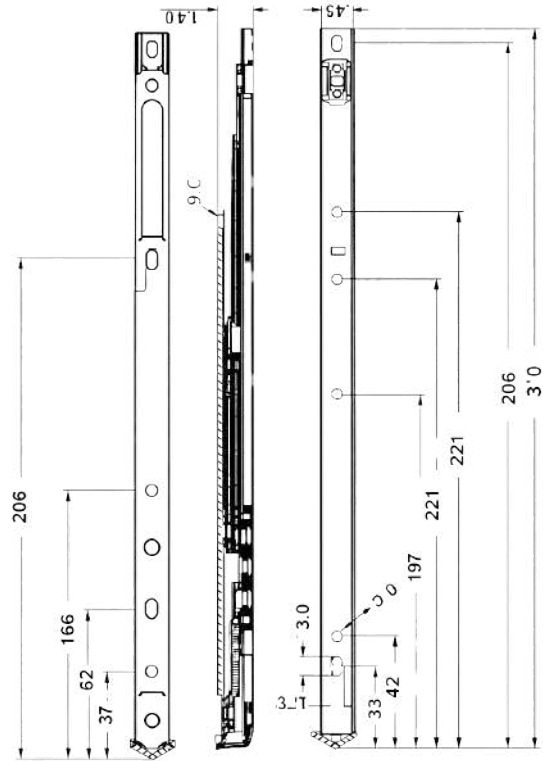


# FRICTION STAY



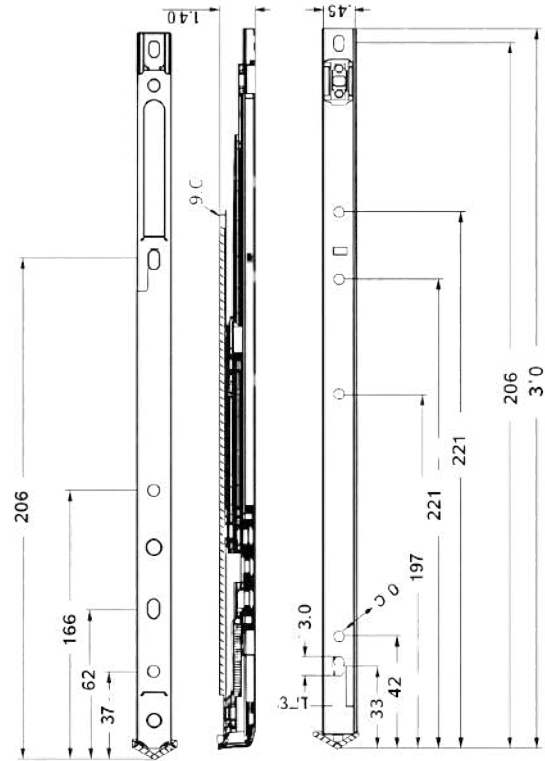
Item Code	Size	Bar Thickness	Base Width	Max Width	Max Height	Opening Angle	Weight Capacity
EFS-CH-304-12	12"	2.5mm	18mm	650mm	1300mm	87.5	30Kg
EFS-CH-304-14	14"	2.5mm	18mm	700mm	1400mm	87.5	35Kg
EFS-CH-304-16	16"	2.5mm	18mm	750mm	1500mm	87.5	40Kg

# FRICTION STAY



Item Code	Size	Bar Thickness	Base Width	Max Width	Max Height	Opening Angle	Weight Capacity
FS-8"*304*2mm	8"	2mm	18mm	550mm	1100mm	87.5	8Kg
FS-10"*304*2mm	10"	2mm	18mm	600mm	1200mm	87.5	10Kg
FS-12"*304*2mm	12"	2mm	18mm	650mm	1300mm	87.5	12Kg
FS-14"*304*2mm	14"	2mm	18mm	700mm	1400mm	87.5	15Kg
FS-16"*304*2mm	16"	2mm	18mm	750mm	1500mm	87.5	17Kg

# FRICTION STAY



Item Code	Size	Bar Thickness	Base Width	Max Width	Max Height	Opening Angle	Weight Capacity
EFS-10"*304	10"	2.5mm	18mm	600mm	1200mm	87.5	15Kg
EFS-12"*304	12"	2.5mm	18mm	650mm	1300mm	87.5	17Kg
EFS-14"*304	14"	2.5mm	18mm	700mm	1400mm	87.5	20Kg
EFS-16"*304	16"	2.5mm	18mm	750mm	1500mm	87.5	25Kg

# Gear Box

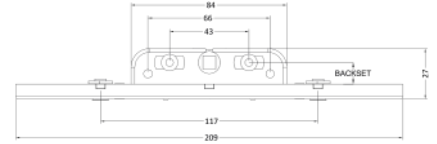


# GEAR BOX

## SGB-07



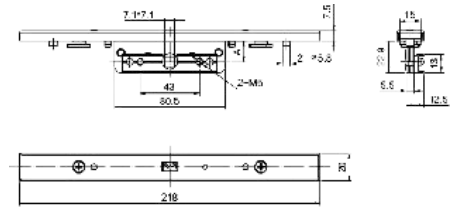
Sliding Gear Box 7.5mm



## SGB-012



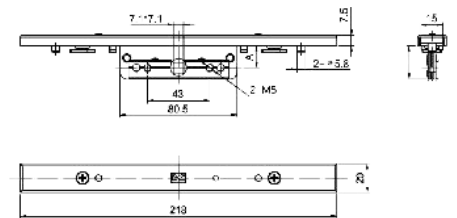
Sliding Gear Box 12mm



## SGB-015



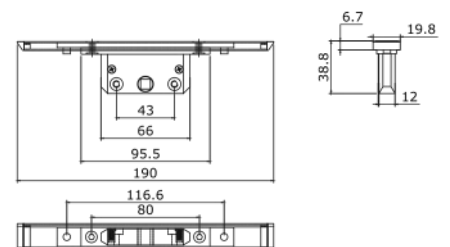
Sliding Gear Box 15mm



## SGB-020



Sliding Gear Box 20mm



# Sliding Handle

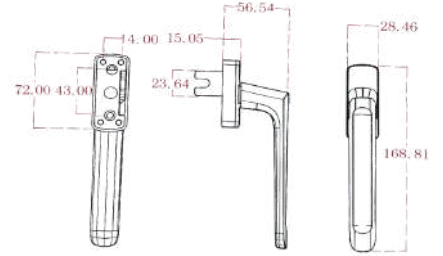


# SLIDING HANDLE

## SH-31



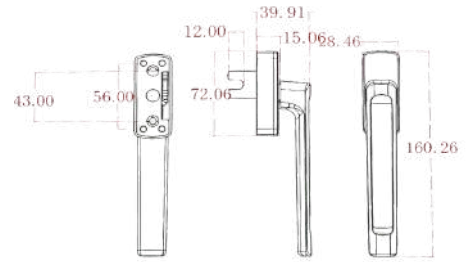
**Casement Window Handle  
Fork+Spindal (Long)**



## SH-32



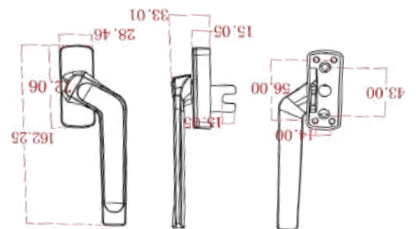
**Sliding Shortneck Handle  
Fork+Spindal (Shortneck)**



## SH-33



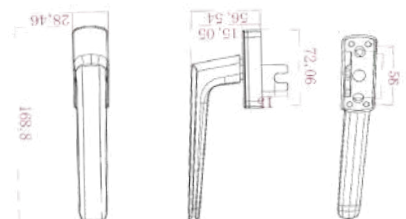
**Sliding Shortneck Creank Handle  
(Fork+Spindal)**



## SH-34



**Casement Window Handle  
Fork+Spindal (Long)**

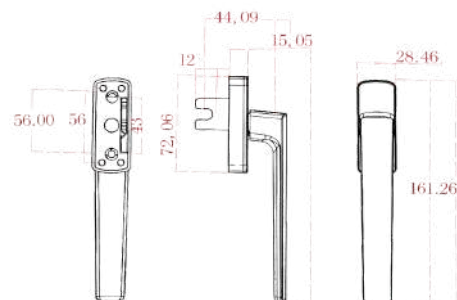


# SLIDING HANDLE

**SH-35**



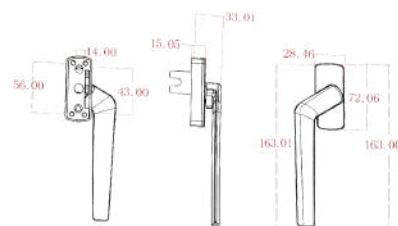
**Sliding Shortneck Handle  
Fork+Spindal (Shortneck)**



**SH-36**



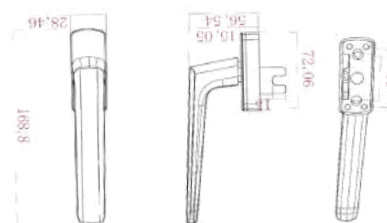
**Sliding Shortneck Creank Handle  
Fork+Spindal**



**SH-37**



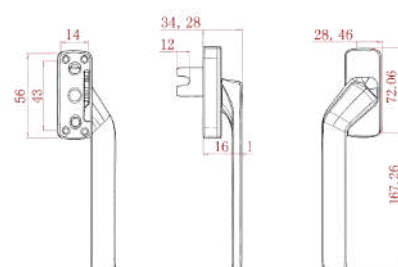
**Casement Window Handle  
Fork+Spindal (Long)**



**SH-38**



**Sliding Shortneck Creank Handle  
Fork+Spindal**

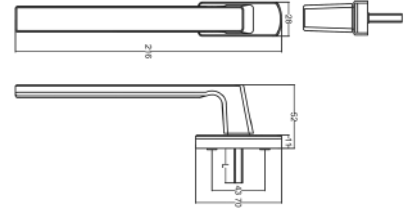


# SLIDING HANDLE

**SH-39**



Sliding Long Handle (Premium)



**SH-40**



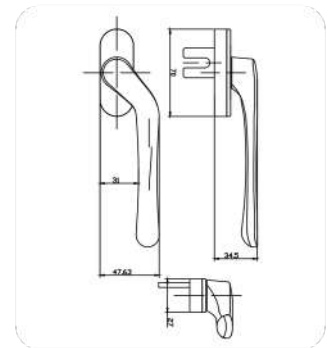
Sliding Shortneck Handle  
Left/Right (ALP)



**SH-41**



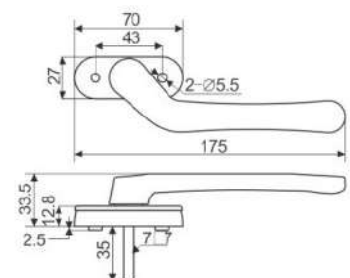
Sliding Shortneck Handle With fork  
Left/Right



**SH-09**



Sliding Shortneck Handle  
Left/Right

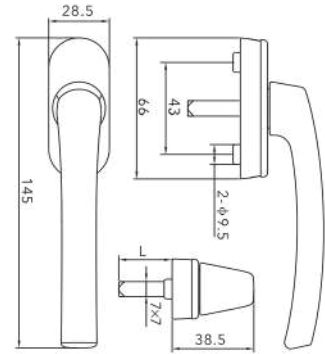


# SLIDING HANDLE

**SH-010**



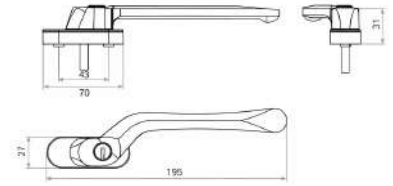
**Sliding Handle (LUXURY)**



**SH-011**



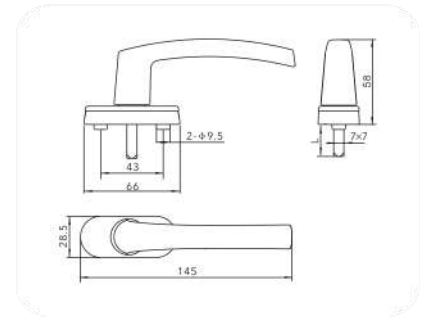
**Sliding Shortneck Handle With Key  
Left/Right**



**SH-13**



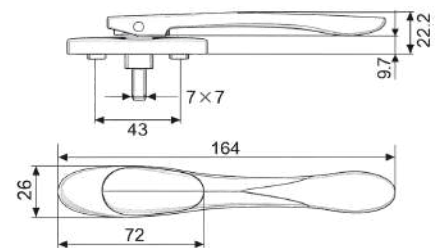
**Sliding Handle Eco**



**SH-14**



**Sliding Zero Handle**



# Casement Handle

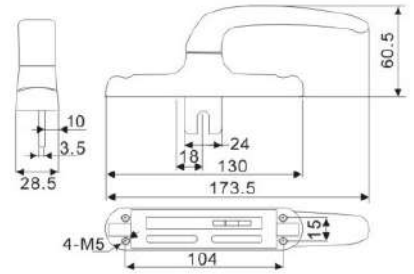


# — CASEMENT WINDOW HANDLE —

## CWH-01



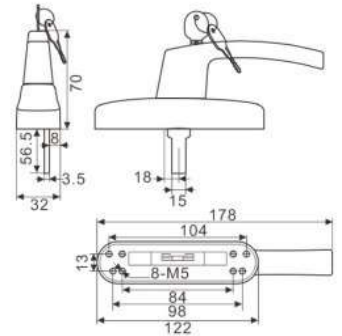
**40mm/50mm Casement Mini Cremone Handle**



## CWH-02



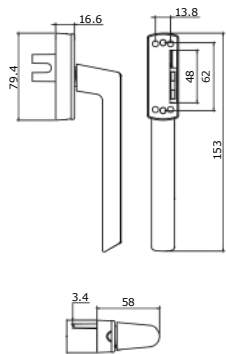
**40mm/50mm Casement Cremone Handle With Key**



## CWH-03



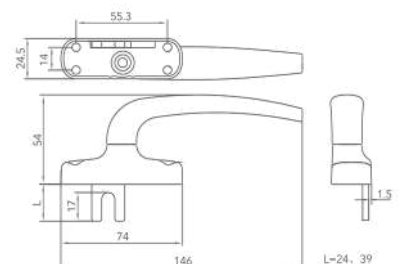
**40mm/50mm Casement Cremone Handle**



## CWH-04



**40mm/50mm Casement Cremone Handle**

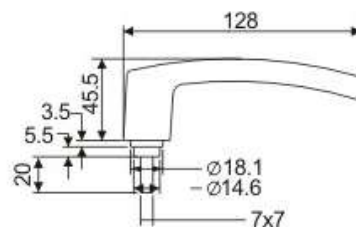


# — CASEMENT WINDOW HANDLE —

## CH-05A



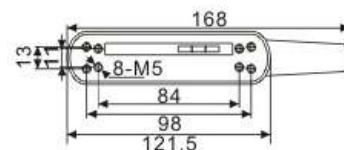
**Detachable Cremone  
Handle**



## CWH-05B



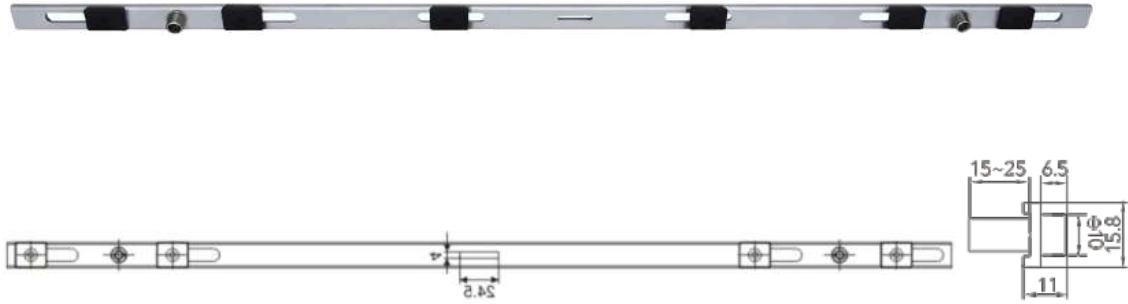
**Detachable Cremone  
Handle Base**



# Transmission Rod

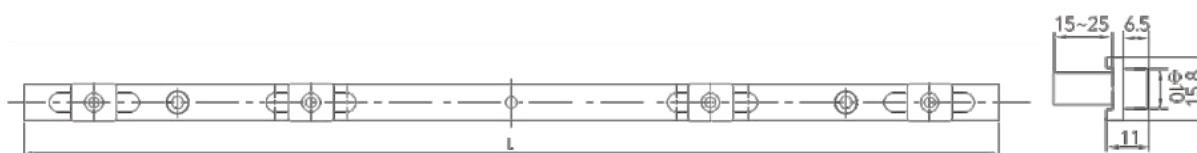


# TRANSMISSION ROD



Item Code	Description	L	A	Lock Point
STR-0600	600mm Sliding Transmission Rod	600	10mm/20mm	2
STR-0800	800mm Sliding Transmission Rod	800	10mm/20mm	2
STR-01000	1000mm Sliding Transmission Rod	1000	10mm/20mm	2
STR-01200	1200mm Sliding Transmission Rod	1200	10mm/20mm	2
STR-01400	1400mm Sliding Transmission Rod	1400	10mm/20mm	3
STR-01600	1600mm Sliding Transmission Rod	1600	10mm/20mm	3
STR-01800	1800mm Sliding Transmission Rod	1800	10mm/20mm	4

# TRANSMISSION ROD



Item Code	Description	L	A	Lock Point
CTR-0600	40mm Casement Transmission Rod	600	10mm/20mm	2
CTR-0800	40mm Casement Transmission Rod	800	10mm/20mm	2
CTR-01000	40mm Casement Transmission Rod	1000	10mm/20mm	2
CTR-01200	40mm Casement Transmission Rod	1200	10mm/20mm	2

Item Code	Description	L	A	Lock Point
ECTR-0600	50mm Euro Casement Transmission Rod	600	10mm/20mm	2
ECTR-0800	50mm Euro Casement Transmission Rod	800	10mm/20mm	2
ECTR-01200	50mm Euro Casement Transmission Rod	1200	10mm/20mm	2

# Sliding Espage



# SLIDING ESPAGE



Product Code	Description	Dimension
SWE-400	Sliding Espage	400mm
SWE-600	Sliding Espage	600mm
SWE-800	Sliding Espage	800mm
SWE-1000	Sliding Espage	1000mm
SWE-1200	Sliding Espage	1200mm
SWE-1400	Sliding Espage	1400mm
SWE-1600	Sliding Espage	1600mm
SWE-1800	Sliding Espage	1800mm
SWE-2000	Sliding Espage	2000mm

# SLIDING ESPAGE



Product Code	Description	Dimension
SDG-1800*92*15	Sliding Door D Handle Espage	1800*92*15mm
SDG-1800*192*15	Sliding Door D Handle Espage	1800*192*15mm

# Sliding Metro Handle

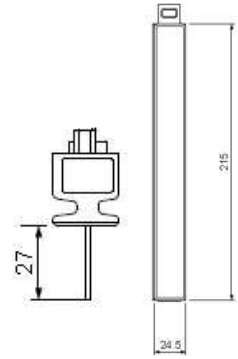


# SLIDING METRO HANDLE

**SMH 01 - 9"**



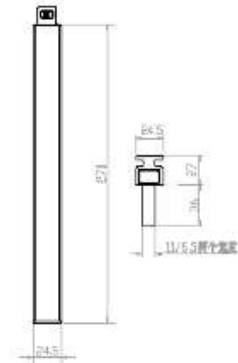
SLIDING METRO HANDLE



**SMH 02 - 11"**



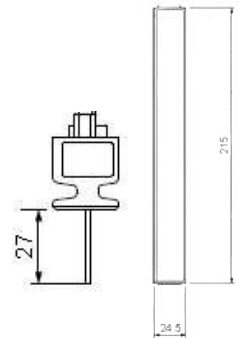
SLIDING METRO HANDLE



**SMH 03 - 9"**



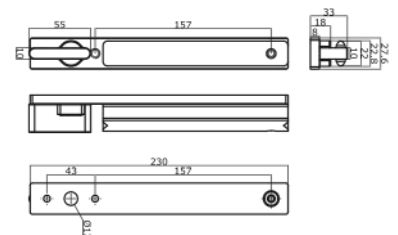
SLIDING METRO DUMMY HANDLE



**SMH 04**



SLIDING METRO HANDLE WITH NOB (FRONT)

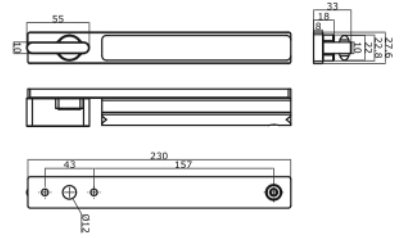


# SLIDING METRO HANDLE

## SMH 05



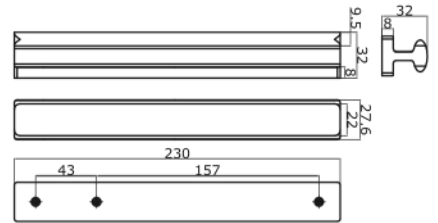
**SLIDING METRO HANDLE WITH NOB (BACK)**



## SMH 06



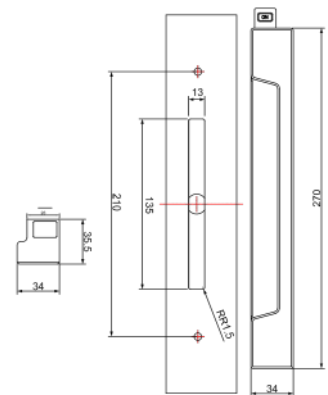
**SLIDING METRO HANDLE**



## SMH 07



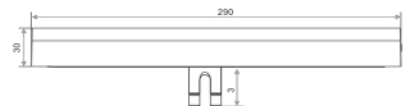
**SLIDING METRO HANDLE**



## SMH 08



**SLIDING METRO HANDLE**

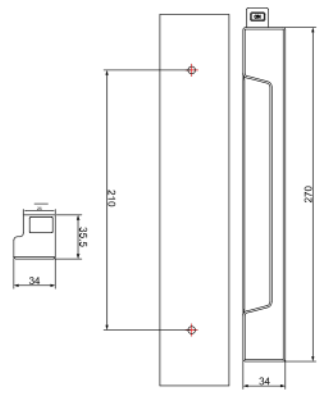


# SLIDING METRO HANDLE

**SMH 09**



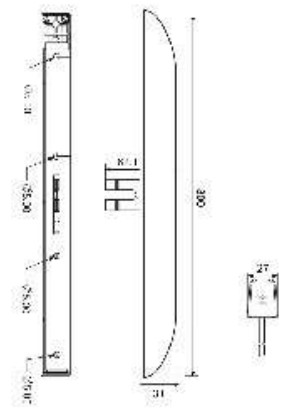
SLIDING METRO HANDLE



**SMH 010**



SLIDING METRO HANDLE



# D Handle

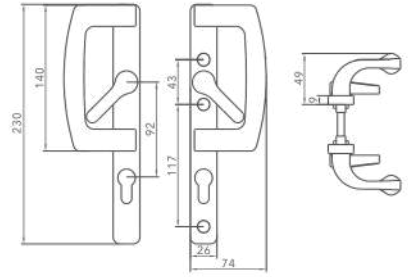


# D HANDLE

**SL-021**



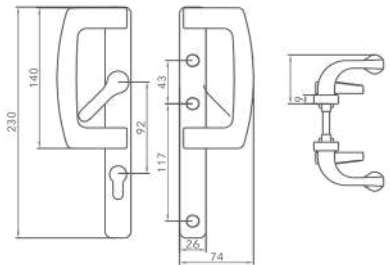
**Sliding Shortneck D Handle  
(Both side Key)**



**SL-022**



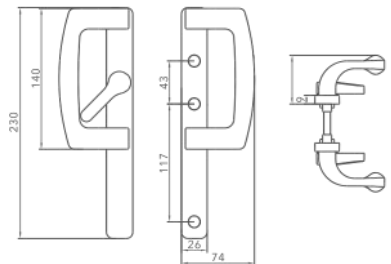
**Sliding Shortneck D Handle  
(One side Key One Side Dummy)**



**SL-023**



**Sliding Shortneck D Handle  
(Dummy With Nob)**



# Auto Shoot Bolt



# AUTO SHOOT BOLT

**ASB -10"**



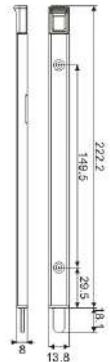
**AUTO TOWER BOLT 250MM**



**ASB -10"**



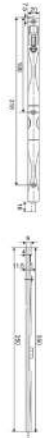
**AUTO SHOOT BOLT 250MM**



**ASB -14"**



**AUTO TOWER BOLT 350MM**



**ASB -16"**



**AUTO SHOOT BOLT**



# Counter Plate

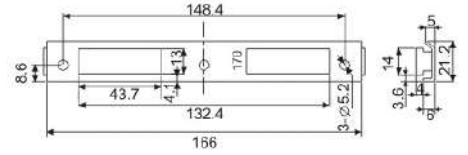


# COUNTER PLATE

## CP-01



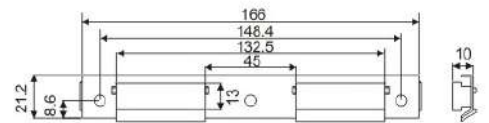
**Counter Plate**



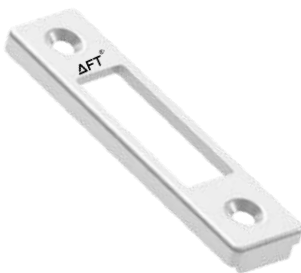
## CP-02



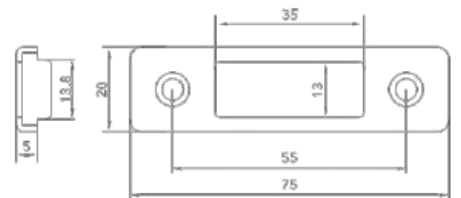
**Premium Counter Plate**



## CP-03



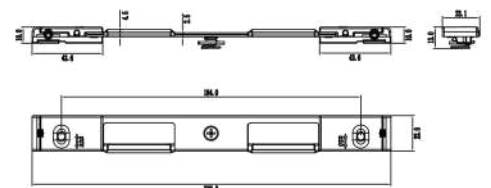
**Counter Plate**



## CP-04



**Counter Plate**



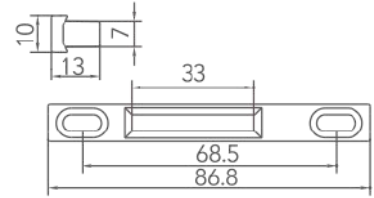
# Accessories



## TLP-01



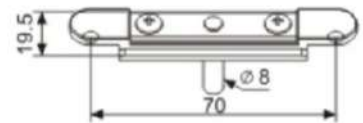
Sliding Touch Lock Striker



## ETC-01



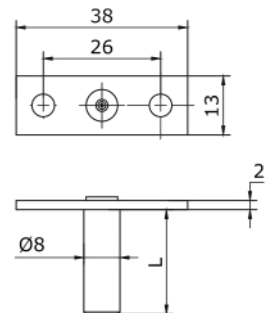
Euro T- Conector [15mm/25mm]



## TC-02



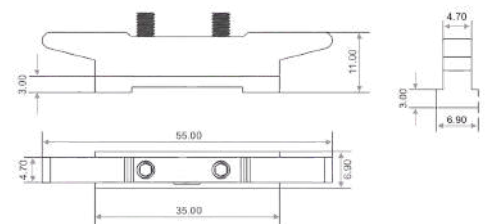
Regular T Conector



## ECS-01



8.5mm Sliding Striker

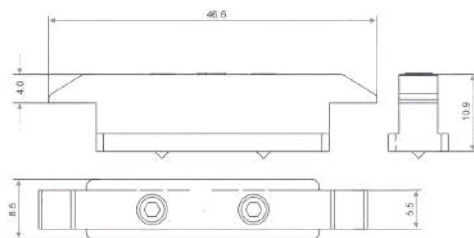


# ACCESSORIES

## ECS-02



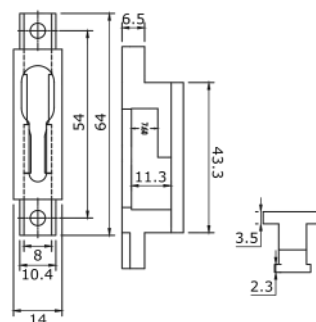
**10.5mm Sliding Striker**



## ECS-03



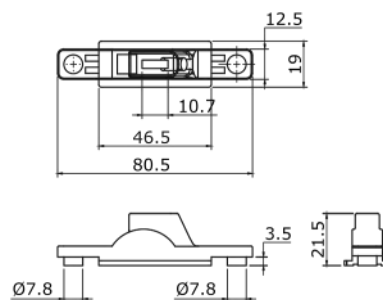
**Sliding Multilocking Receiver  
Allenkey Striker**



## ENH-01



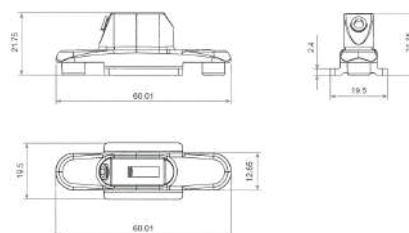
**Sliding 1- Way Nib Holder**



## ENH-02



**Sliding 2- Way Nib Holder**

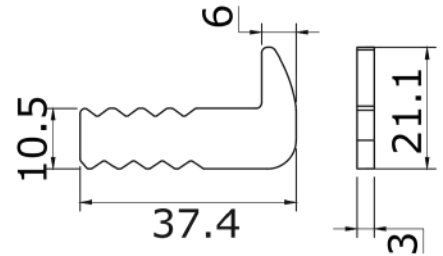


# ACCESSORIES

**JH-03**



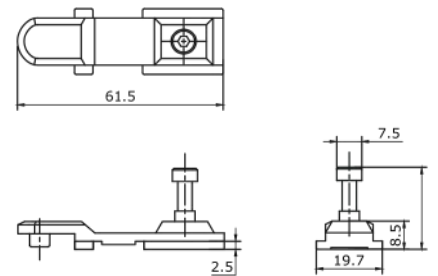
**Sliding Nib Holder J Hook**



**ELP-01**



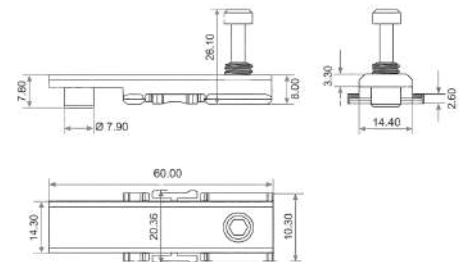
**Sliding Locking Pin**



**ELP-02**



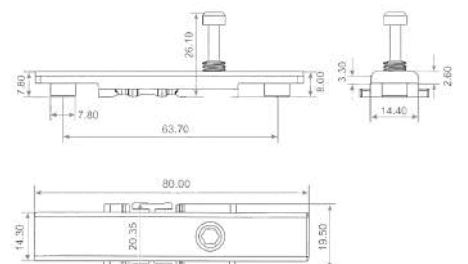
**Sliding Locking Pin -15mm**



**ELP-03**



**Sliding Locking Pin -25mm**

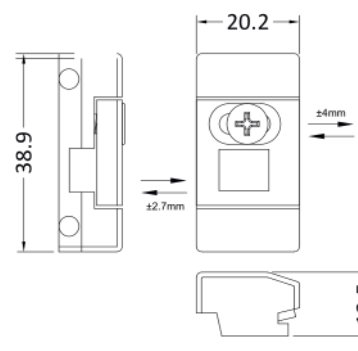


# ACCESSORIES

**SBS**



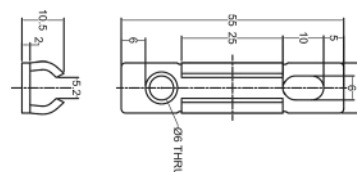
**SHOOT BOLT KEEPER**



**SDS-01**



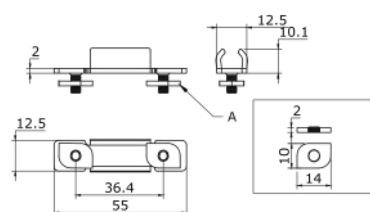
**Sliding Keep**



**SDS-02**



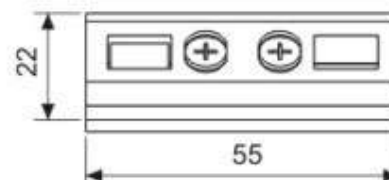
**Sliding Keep**



**SH-04**



**Euro Sash Lifter (Metal)**

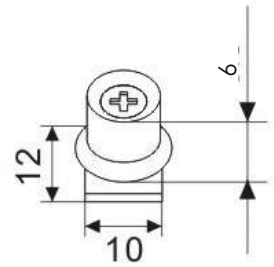


# ACCESSORIES

**LP-06**



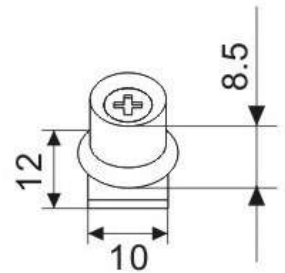
Locking Paul 6mm



**LP-08**



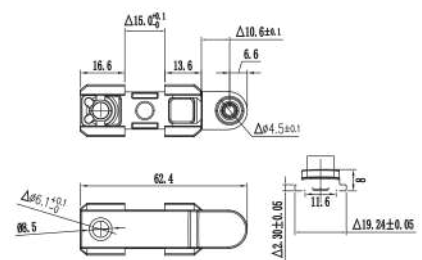
Locking Paul 8mm



**ELP-08**



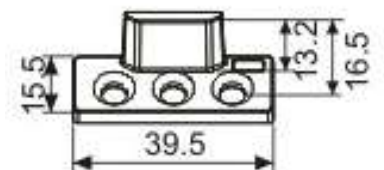
Euro Locking Paul



**LS-01**



40mm Casement window Striker  
(screw Base)

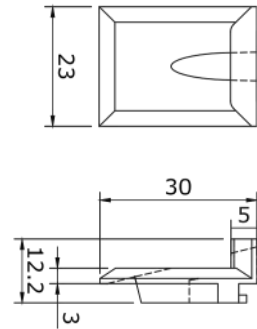


# ACCESSORIES

**LS-02**



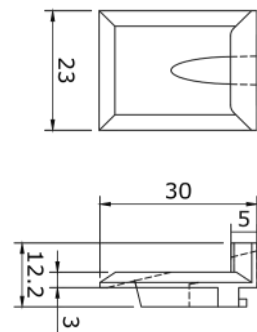
**40mm Casement window Striker  
(Alanky Base)**



**LS-03**



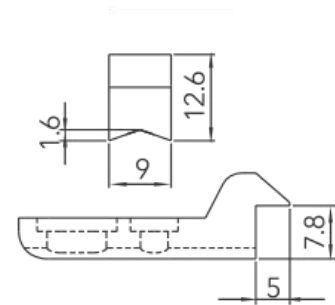
**50mm Casement window Striker  
(Alanky Base)**



**CP-05**



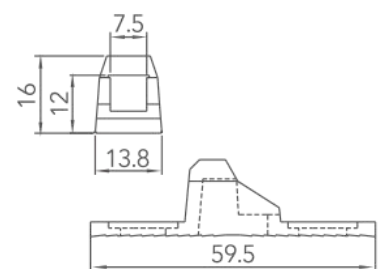
**Touch Lock Hook (for sl 04)**



**CP-06**



**Touch Lock Hook**



# ACCESSORIES

**CWK**

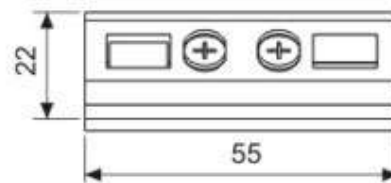


EURO SASH LIFTER

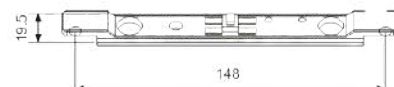
**SH-04**



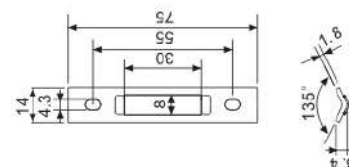
Euro Sash Lifter (Metal)



**ELS-04**



**CP-08**



# Plastic Accessories

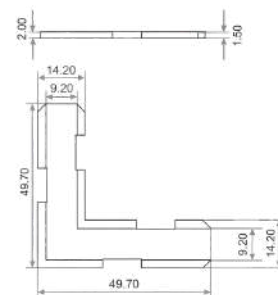


# ACCESSORIES

**MS-02**



**Casement Sash Wing (50mm Door / 50mm Window Sash)**



**MS-03**



**Sliding Antidust Pad (27mm/29mm/32mm)**

**MS-04**

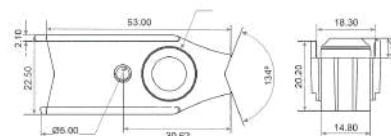


**Sliding Antidust Pad (35mm/37mm)**

**MS-05**



**Sash stopper (27mm/29mm)**

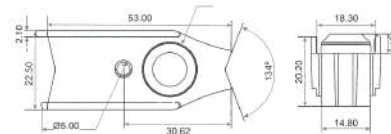


# ACCESSORIES

**MS-06**



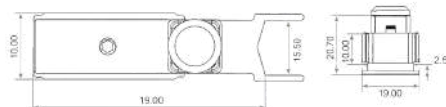
**Sash stopper (37mm)**



**MS-07**



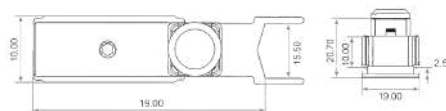
**Euro Sash stopper (29mm/32mm)**



**MS-08**



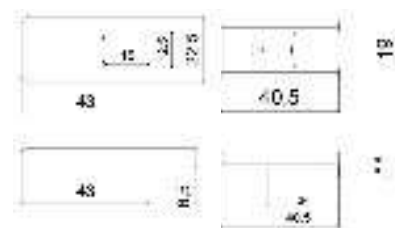
**Euro Sash stopper (35mm/37mm)**



**MS-09**



**Interlock Cap (27mm)**

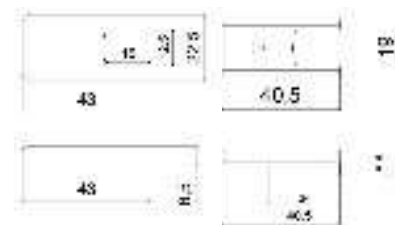


# ACCESSORIES

**MS-010**



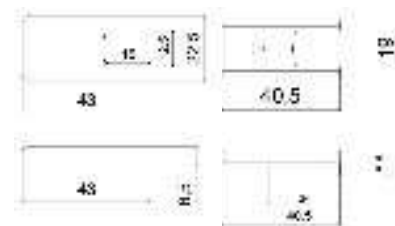
**Interlock Cap (29mm/32mm)**



**MS-011**



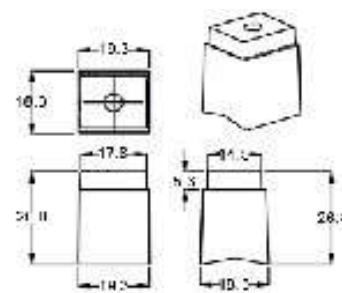
**Interlock Cap (35mm/37mm)**



**MS-012**



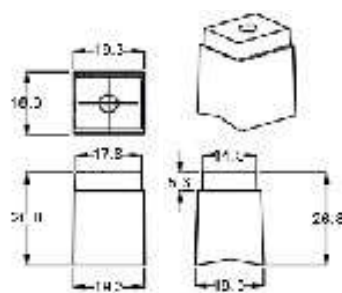
**Sliding Fix Stoper (27mm/29mm)**



**MS-013**



**Sliding Fix Stoper (35mm/37mm)**



**ACCESSORIES**

**MS-014**



**Sliding Anti Retling Guide  
(29mm/32mm)**

---

**MS-015**



**Sliding Anti Retling Guide  
(35mm/37mm)**

---

**MS-016**



**Window Pakker (3mm/5mm)**

---

**MS-017**



**Glass Pakker (3mm/5mm)**

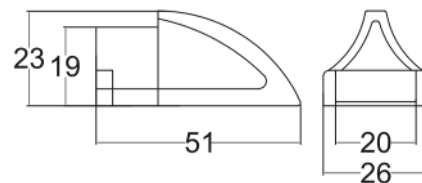
---

# ACCESSORIES

**SBS-13**



Sliding Bump Stoper



**MS-018**



Sliding Drainage Cap

**MS-019**

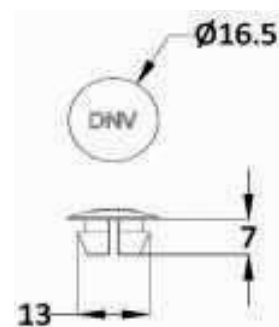


Sliding Drainage Cap

**MS-020**



Fastner Cap

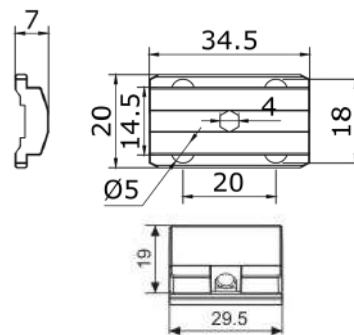


# ACCESSORIES

**SH-05**



**Euro Sash Lefter (Pvc)**



**PLS**



**Euro Poltmide Strip**

**PVC ADAPTOR**



**Sliding PVC Adaptor**

**MS-01**




**Sliding Sash  
Wing [27mm/29mm/32mm/ 37mm]**

# **ΔFT<sup>®</sup>**

## **ACCUFIT PRODUCTS**

Precision Hardware for Modern Architecture

### **CONTACT US**

 +91 9717003607  
+91 9717768007

 [info@accufit.co.in](mailto:info@accufit.co.in)

 [www.accufit.co.in](http://www.accufit.co.in)

### **HEAD OFFICE**

Accufit Products (AFT)  
C-51, C Block, Sector 58  
Noida, Uttar Pradesh 201309  
India

### **PRESENCE**

India



**Scan to view**  
Complete Digital Catalogue